

# USER GUIDE

NCR P1532 POS (7734)

Release 1.0



BCC5-0000-5062  
Issue C



---

The product described in this document is a licensed product of NCR Corporation.

NCR is a registered trademark of NCR Corporation. Product names mentioned in this publication may be trademarks or registered trademarks of their respective companies and are hereby acknowledged.

The terms HDMI and HDMI High-Definition Multimedia Interface, and the HDMI Logo are trademarks or registered trademarks of HDMI Licensing LLC in the United States and other countries.

Where creation of derivative works, modifications or copies of this NCR copyrighted documentation is permitted under the terms and conditions of an agreement you have with NCR, NCR's copyright notice must be included.

It is the policy of NCR Corporation (NCR) to improve products as new technology, components, software, and firmware become available. NCR, therefore, reserves the right to change specifications without prior notice.

All features, functions, and operations described herein may not be marketed by NCR in all parts of the world. In some instances, photographs are of equipment prototypes. Therefore, before using this document, consult with your NCR representative or NCR office for information that is applicable and current.

To maintain the quality of our publications, we need your comments on the accuracy, clarity, organization, and value of this book. Please use the link below to send your comments.

Email: [FD230036@ncr.com](mailto:FD230036@ncr.com)

Copyright © 2017-2020

By NCR Corporation

Global Headquarters

864 Spring St NW

Atlanta, GA 30308

U.S.A.

All Rights Reserved

# Preface

## Audience

This publication is written for end users, hardware installer/service personnel, system integrators, and field engineers.

**Notice:** This document is NCR proprietary information and is not to be disclosed or reproduced without consent.

## Safety Requirements

The *NCR P1532 POS* conforms to all applicable legal requirements. To view the compliance statements see the [\*NCR HSR POS Terminals Safety and Regulatory Statements\*](#) (BCC5-0000-5069).



**Caution:** The on/off switch is a logic switch only. The AC line voltage primaries are live at all times when the power cord is connected. Therefore, disconnect the AC power cord before opening the unit to install features or service this terminal.

### *Lithium Battery Warning*



**Warning:** Danger of explosion if battery is incorrectly replaced. Replace only with the same or equivalent type as recommended by the manufacturer. Discard used batteries according to the manufacturer's instructions.



**Attention:** Il y a danger d'explosion s'il y a remplacement incorrect de la batterie. Remplacer uniquement avec une batterie du même type ou d'un type recommandé par le constructeur. Mettre au rebut les batteries usagées conformément aux instructions du fabricant.

### *Battery Disposal (Switzerland)*

Refer to Annex 4.10 of SR814.013 for battery disposal.

### *IT Power System*

This product is suitable for connection to an IT power system with a phase-to-phase voltage not exceeding 240 V.

### *Peripheral Usage*

This terminal should only be used with peripheral devices that are certified by the appropriate safety agency for the country of installation (UL, CSA, TUV, VDE) or those which are recommended by NCR Corporation.



**Warning:** DO NOT connect or disconnect the transaction printer while the terminal is connected to AC power. This can result in system or printer damage.



**Warning:** DO NOT connect or disconnect any serial peripherals while the terminal is connected to AC power. This can result in system or printer damage.

### ***Grounding Instructions***

In the event of a malfunction or breakdown, grounding provides a path of least resistance for electric current to reduce the risk of electric shock. This product is equipped with an electric cord having an equipment-grounding conductor and a grounding plug. The plug must be plugged into a matching outlet that is properly installed and grounded in accordance with all local codes and ordinances. Do not modify the plug provided – if it will not fit the outlet, have the proper outlet installed by a qualified electrician. Improper connection of the equipment-grounding conductor can result in a risk of electric shock.

The conductor with insulation having an outer surface that is green with or without yellow stripes is the equipment-grounding conductor.

If repair or replacement of the electric cord or plug is necessary, do not connect the equipment-grounding conductor to a live terminal. Check with a qualified electrician or service personnel if the grounding instructions are not completely understood, or if you are in doubt as to whether the product is properly grounded.

Use only 3-wire extension cords that have 3-prong grounding plugs and 3-pole receptacles that accept the product's plug. **Repair or replace damaged or worn cords immediately.**

# Table of Contents

## Chapter 1: Product Overview

Introduction .....	1
P1532 Base Models .....	2
Features and Benefits .....	3
Optional Features and Benefits .....	5
Optional Add-On Accessories .....	5
Base Memory Options .....	6
Storage Options .....	6
Display Options .....	6
Bezel Options .....	7
Right Side Features .....	7
Mounting Configurations .....	7
Customer Display Options .....	8
Expansion Options .....	9
2D Scanner Module Option .....	9
Programming the Scanner .....	9
Specifications .....	10
Label Locations .....	12
Operator Controls .....	13
Power Switch .....	13

## Chapter 2: Hardware Installation

Installation Restrictions .....	14
Installation Notes .....	14
Cable Restraint .....	14
Footprint .....	14
Power .....	15
Moisture .....	15
Touch Screen Cleaning .....	15
Magnetic Strip Reader (MSR) Cleaning .....	15
Biometric Cleaning .....	16
Hardware Platform Drivers .....	16
Ergonomic Workplace .....	17
Installing the Terminal .....	18
Installing the Power Supply .....	19

Connecting the Peripheral Cables .....	22
Cable Routing .....	22
Connecting AC Power .....	23
Disconnecting the Power Cable .....	23
Connecting to a Network .....	23
Starting Up the P1532 Terminal .....	24
Identifying the MAC Address .....	24
Using External Connectors .....	25
RJ12 Serial Port .....	26
RJ45 Serial Port .....	27
LAN .....	28
USB 3.0 Compliant Ports .....	29
Cash Drawer (CD) Port .....	30
Installing a Transaction Printer .....	31
Installing a Cash Drawer .....	32
Second Cash Drawer Cable Connection .....	33
Removing Top Assembly .....	34

### **Chapter 3: Touch Screen Calibration**

Proper Touch Screen Methods .....	35
Calibrating the Touch Screen .....	37
Resistive Touch Screen Calibration .....	37

### **Appendix A: Product IDs**

UPP Configurations .....	A
--------------------------	---

## **Revision Record**

Issue	Date	Remarks
A	June 2016	First Issue
B	Mar 2017	<ul style="list-style-type: none"> <li>• New PIDs</li> <li>• Updated the Features and Benefits</li> </ul>
C	Nov 2020	Added “Programming the Scanner” section

---

## Chapter 1: Product Overview

---

### Introduction



The NCR P1532 is a Point-of-Sale (POS) terminal designed for the restaurant and food service environment. The terminal utilizes a next generation Intel® Celeron™ Processor N3060 (Dual core, 2.48 GHz). The highly efficient Celeron processor offers great performance, but with lower power consumption for a more reliable design. The POS terminal comes in a 15-inch display with both resistive and surface capacitive (SCap) touch screen.

## P1532 Base Models

Base Model	Description
7734-0900-8800	P1532 15" Resistive Touch POS Lead Unit, Quad, Configurable
7734-0901-8800	P1532 Base Model Lead Unit PID for Resistive Touch BIO
7734-0902-8800	P1532 Base Model Lead Unit PID for Resistive Touch 2n1 Sign-In
7734-3900-8800	P1532 15" Surface Capacitive Touch POS Lead Unit, Quad, Configurable
7734-3901-8800	P1532 Base Model Lead Unit PID for SCAP Touch BIO
7734-3902-8800	P1532 Base Model Lead Unit PID for SCAP Touch 2n1 Sign-In



## Features and Benefits

Features	Benefits
Intel® Celeron™ Processor N3060 (Dual core, 2.48 GHz).	Fast performance, powerful dual-core and very low power. Long life cycle commitment from Intel.
Dual-Core Technology	Integrates two complete execution cores in a single processor providing advancements in simultaneous computing.
NCR Countertop Enclosure	Fully integrated, low-profile, water, and tamper resistant housing for high functional retail interaction.
CableLock™ System	Cable management system that uses a cable door to secure cable connections for better reliability.
15" XGA (1024x768) LED LCD Primary Display	Energy efficient and long life LED display. Excellent brightness, contrast, and color depth. Enables the proper display of high-quality graphics to ease use and decrease training time for retail employees or to directly engage the consumer.
Software-adjustable Brightness and Contrast Control for Main Display	Better display characteristics for user as well as significantly increased bulb life for main display.
Integrated surface capacitive or resistive touch screen controller	Resistive screen offers low-cost option with superb ease of use. Can be used with instruments other than fingertip, has very high durability, and does not "drift" over time. Capacitive screen offers greater durability for applications that do not require gloved or stylus input.
SATA Flash Storage SSD Options	32GB Solid-State Drive (SSD) standard or large capacity, 64GB SSD. Limited 16GB SSD options available. Additional capacities may be available. No moving parts for increased uptime and better reliability.
System Management features	Supports ACPI, SMBIOS, DMI, SNMP, WfM, and PXE. Also supports metering, remote desktop, remote execution, BIOS update, system inventory and asset management.
Recovery Tool	Provides a dedicated recovery button for factory restore and site backups.
4 Serial Ports (2xRJ12 powered @ 12v, 2xRJ45 powered @12v or 5v)	Provides data I/O with any RS-232 peripheral and power, minimizing failure points.

Features	Benefits
4 USB 3.0 Ports	Provides data I/O with any USB peripheral. Fast data rates with USB. <b>Note:</b> This product does not support low speed USB devices (1.5Mbit/s). NCR recommends using Full, High, and SuperSpeed USB devices to avoid a possible coexistence problem with higher speed peripherals in electrically noisy environments not following the NCR Workstation and Peripherals AC Wiring Guide (BSTO-2115-53). None of NCR's current peripherals are low speed USB.
1 Powered USB 12 V Port	Provides 12V power and data I/O with any USB peripheral and can be used as a standard USB 2.0 port. Refer to <a href="http://www.poweredusb.org">www.poweredusb.org</a> for more information.
1 Dedicated Cash Drawer Port (RJ12, 24V)	Provides port for direct drive cash drawers (12 V or 24 V dual cash drawer support via Y cable).
1 HDMI Port	Provides port for a second digital display. Cable available to DVI.
1 Display Port	Provides port for third digital display.
Retail and Hospitality Hardened Design	Offers a spill resistant, high impact enclosure that is built to withstand tough in-store conditions with continuous operation. The fanless configuration increases reliability by preventing forced air through the unit, thereby reducing contaminants in the system. The P1532 is configured as a silent, thin-client, fanless, solid-state terminal for maximum reliability.
Variable Position Tilt-Stand with Power Supply	Provides variable tilt positions that are secured without need for pins or locking knobs.  The dual-friction hinge allows for continuous, smooth rotation throughout the tilt angle. The stand includes a CableLock™ system to prevent accidental disconnect or tampering. It also offers through-counter cable routing, which hides all cabling from view. With the power supply located in the base as standard, thermal dissipation of the power supply is isolated and away from the touch head motherboard electronics, which increases reliability of the terminal. The power supply is also field serviceable. For powered 24V USB option, the large power supply (150W) is external to the base.

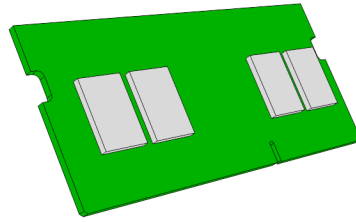
## Optional Features and Benefits

Features	Benefits
Integrated MSR	Provides a 3-Track, Encrypting MSR.
Biometrics Fingerprint Reader	Offers an Integrated Digital Persona 4500 optical, 512 dpi resolution fingerprint reader for employee login and security.
2-in-1 Dallas/Addimat Sign-In Module	Offers an Integrated 2-in-1 waiter key that incorporates the leading waiter keys Dallas and Addimat in one design.
Customer Display	Offers options that include the 2x20 VFD ora 7-inch color widescreen C730 with full motion video, POS or pole mount. The terminal provides the necessary power for operation.
Mounting Flexibility	Provides a compact design that allows wall, pole, or tilt-stand mounting.
Powered USB Expansion Card	Adds a single 24V Powered USB port.
RJ12 Expansion Card	Adds two additional powered RJ12 connector, for a total of 6 powered serial ports.

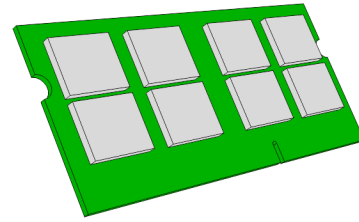
## Optional Add-On Accessories

Features	Benefits
Integrated Speakers	Provides high-quality feedback for user interaction by adding stereo speakers mounted internally.
Countertop Mount Kit	Provides a mount bracket to screw down the tilt-stand base to a countertop to secure the terminal.
Scanner Kit with Magnet	Adds a Honeywell Imager module. The scanner is customer-facing and is mounted to the tilt stand via magnetic bracket.
Tamper Proof Bracket Kit	Provides a metal cover/door that secures the port connectivity panel on the bottom of the terminal tamper proof and secure.
USB Mini-Keyboard with Storage Tray	Provides a USB keyboard and tray that has an 86 key, min-keyboard with a USB interface and a slide-out, black metal tray. The keyboard uses quiet, tactile feel technology and has durable laser-printed key top legends. The keyboard is black and the size is 462 x 168 x 41 mm.

## Base Memory Options



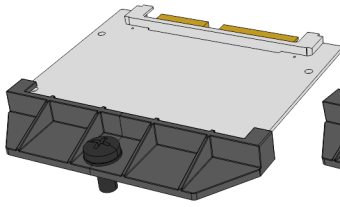
4GB RAM Base Memory  
(7734-F130, 7761-K130)



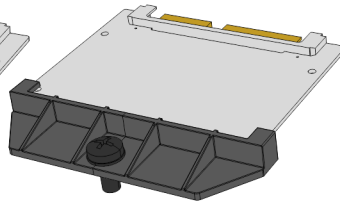
8GB RAM Base Memory  
(7734-F131, 7761-K131 )

70512

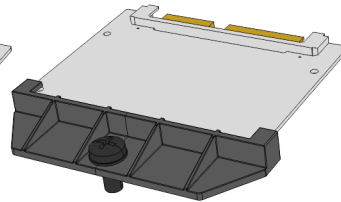
## Storage Options



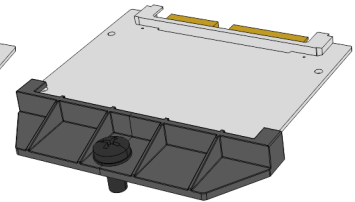
32GB SATA MO-297 SSD  
(7734-F240, 7734-K240)



64GB SATA MO-297 SSD  
(7734-F241, 7734-K241)



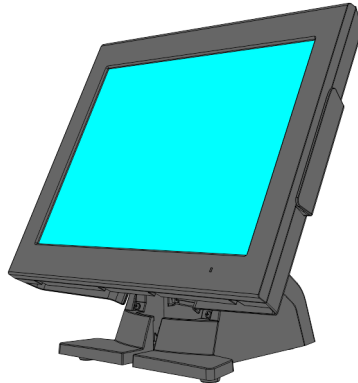
16GB SATA MO-297 SSD  
(7734-F242, 7734-K242 )



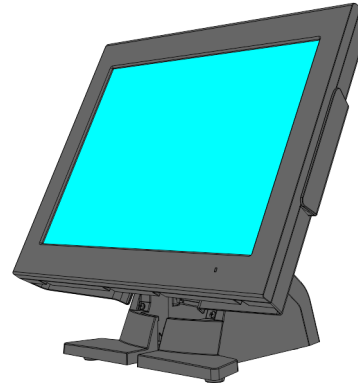
128GB SATA MO-297 SSD  
(7734-F243 )

70513

## Display Options



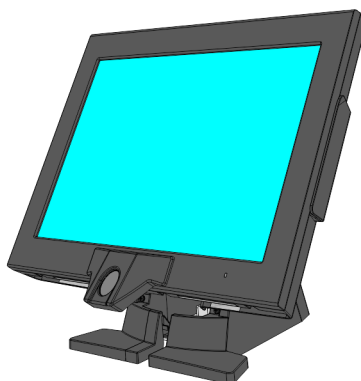
Surface Capacitive Touch  
(7734-F015, 7734-F016, 7734-F017)



Resistive Touch  
(7734-F025, 7734-F026, 7734-F027)

60560

## Bezel Options



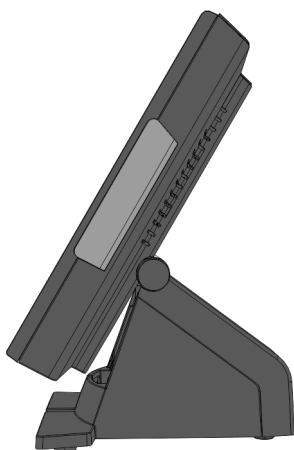
Integrated Biometrics  
(7734-F016, 7734-F026)



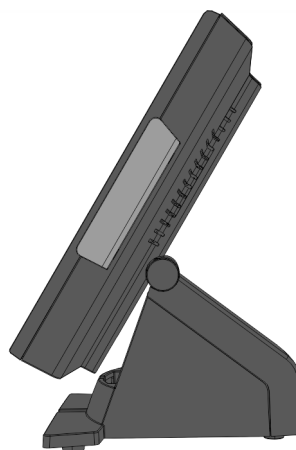
Dallas/Addimat Sign-In  
(7734-F017, 7734-F027 )

70511

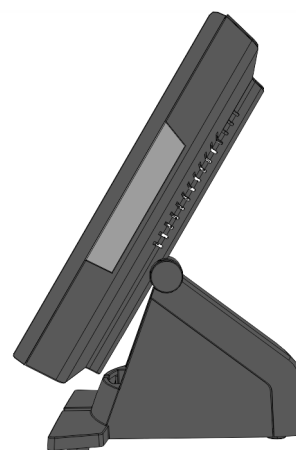
## Right Side Features



SPI 3 Track EMSR  
(7734-F140)



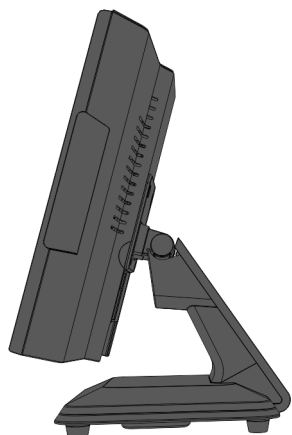
Magtek USB 3 Track MMSR  
(7734-F141)



MSR Blank  
(7734-F142)

60544

## Mounting Configurations



P-Series Stand  
(7734-F172, 7734-K172)

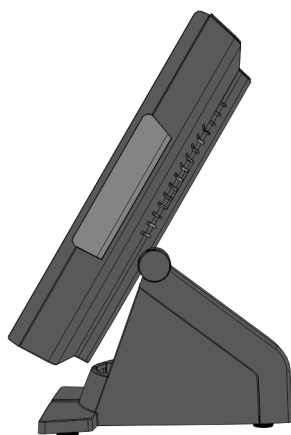
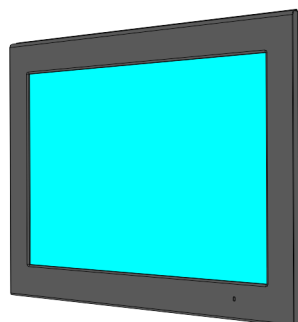
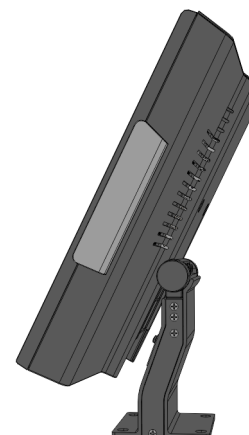


Table Top Tilt Stand  
(7734-F170)



Wall Mount  
(7754-K312)

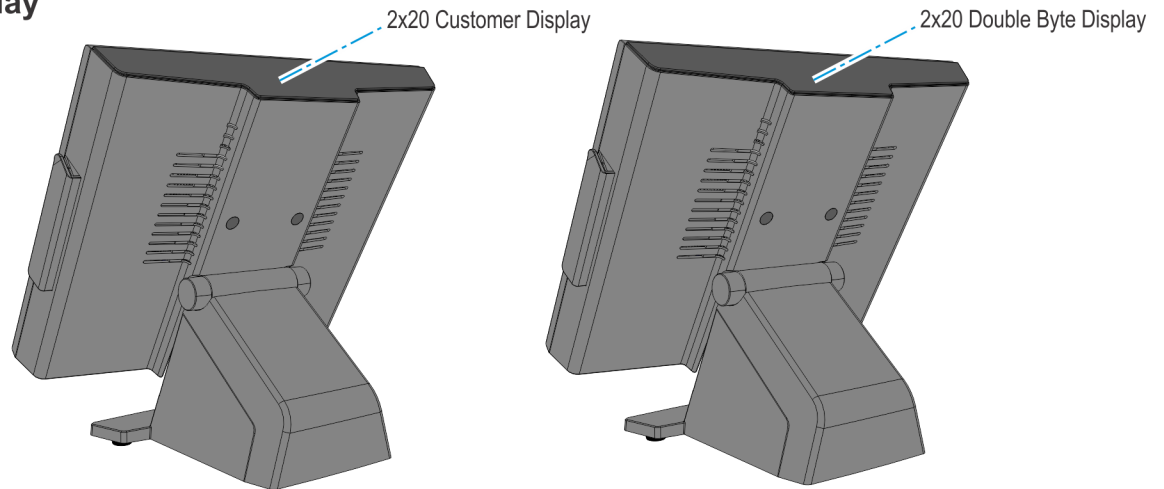


Pole Mount  
(7754-K313)

60541

## Customer Display Options

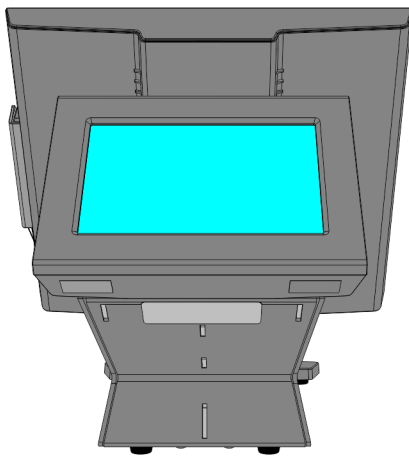
### Customer Display



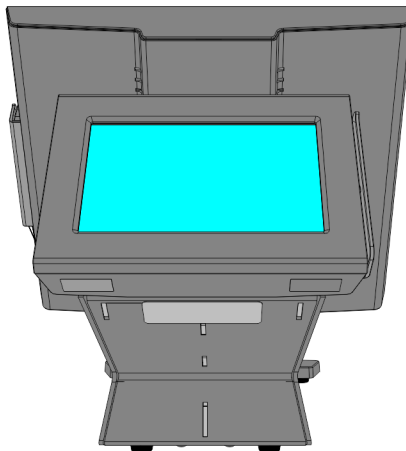
Integrated 2x20 Customer Display  
(7734-F451)

Integrated 2x20 Double Byte Display  
(7734-F452)

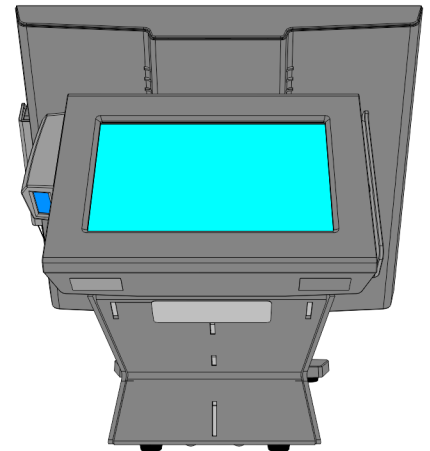
### Customer Display on Stand



C730 Customer Display (Black)  
(7734-F461)



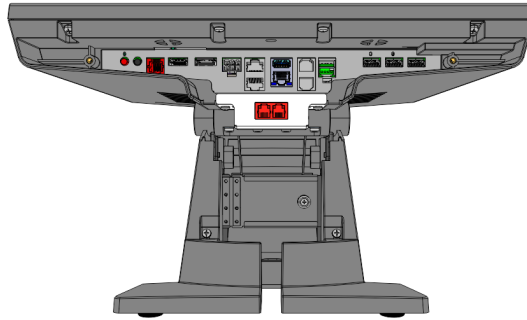
C730 Customer Display (Black)  
with Touch/MSR  
(7734-F462)



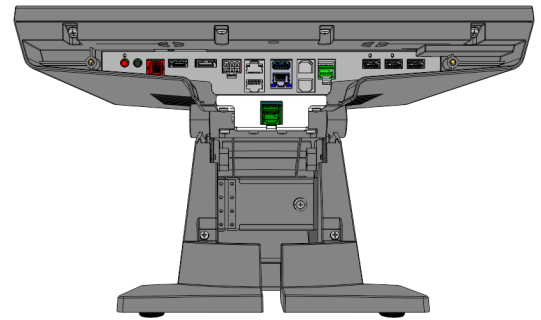
C730 Customer Display (Black)  
with Touch/MSR/Scanner  
(7734-F463)

60543

## Expansion Options



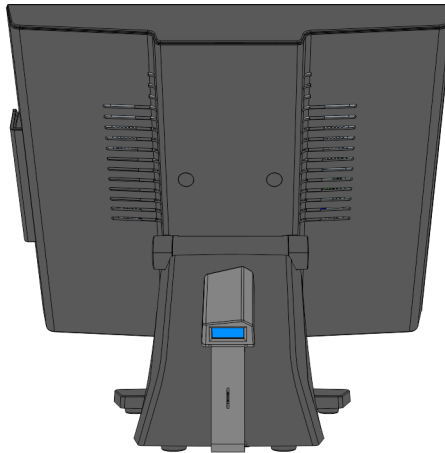
Dual RJ12 Expansion  
(7734-F181)



24V Powered USB Expansion  
(7734-F182)

60542

## 2D Scanner Module Option



P1220/P1230 Customer Scanner Kit w/ Magnet  
(7743-K329)

70514

## Programming the Scanner

To program the scanner to work on a Retail or Hospitality (Aloha) POS, refer to the following sections in the Imager Setup Sheets document (BCC5-0000-5470):

<http://onlinehelp.ncr.com/Retail/Scanners/ImagerSetup/HTML/FrontMatter-HTML/Home.htm>

- **Retail**
  - Honeywell N5680 Retail Quick Imager Setup
- **Hospitality (Aloha)**
  - Honeywell N5680 Aloha Programming Sheet

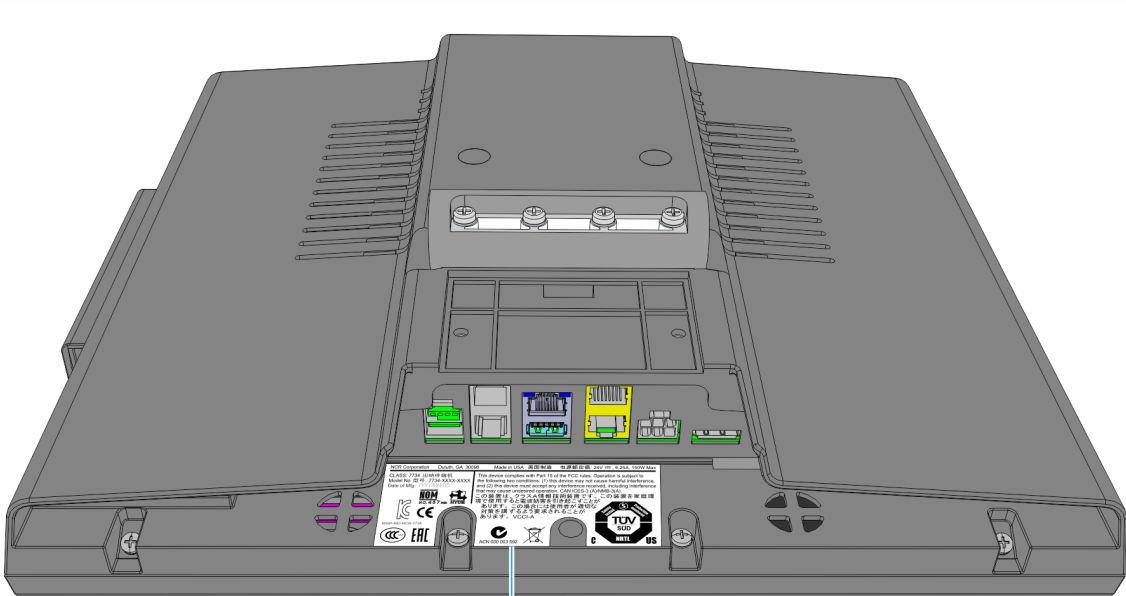
## Specifications

Features	Specifications
Processor	Intel® Celeron™ Processor N3060 (Dual core, 2.48 GHz)
Chipset	Intel® Braswell SoC
Memory	4GB DDR3L Standard, 1 SODIMM slots with up to 8GB DDR3L Supported
Storage Media	<ul style="list-style-type: none"> <li>• 32GB SATA MO-297 SSD</li> <li>• 64GB SATA MO-297 SSD</li> <li>• 16GB SATA MO-297 SSD</li> </ul> <b>Note:</b> Higher capacity may be available upon request.
Operating System	Supports any of the following: <ul style="list-style-type: none"> <li>• Windows Embedded POSReady 7 (32 bit)</li> <li>• Windows Embedded POSReady 7 (64 bit)</li> <li>• Windows 10 Embedded (32 bit)</li> <li>• Windows 10 Embedded (64 bit)</li> </ul>
Primary Display	15-inch XGA (1024 x 768), LED LCD, supports auto-stretching VGA and SVGA resolutions
Touch Screen	<ul style="list-style-type: none"> <li>• 5-Wire Resistive Touch</li> <li>• Surface Capacitive Touch</li> </ul>
Network	Auto-selecting 10/100/1000 Base - T Ethernet using TCP/IP
Enclosure	Polycarbonate/ABS Impact Resistant, High Strength Blend, Environmentally Sealed
Serial Port	<ul style="list-style-type: none"> <li>• (2) RJ12, 12 V</li> <li>• (2) RJ45, 12 V or 5 V</li> </ul>
USB Port	<ul style="list-style-type: none"> <li>• (4) Standard USB 3.0, 5 V</li> <li>• (1) USB + Powered USB, 12 V</li> </ul> <b>Note:</b> This product does not support low speed USB devices (1.5Mbit/s). NCR recommends using Full, High, and SuperSpeed USB devices to avoid a possible coexistence problem with higher speed peripherals in electrically noisy environments not following the NCR Workstation and Peripherals AC Wiring Guide (BSTO-2115-53). None of NCR's current peripherals are low speed USB.
Cash Drawer Port	(2) 12 V or 24 V Dual Cash Drawer Support <b>Note:</b> A Y Cable is required when connecting to any 12 V cash drawer or to dual cash drawers.

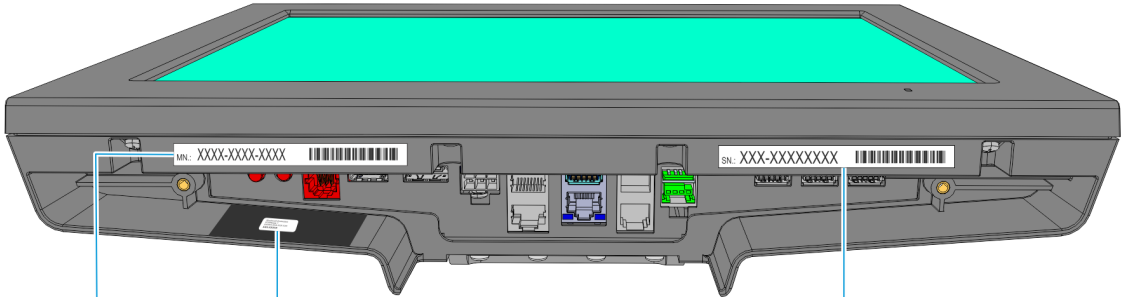


Features	Specifications
HDMI Port	(1) HDMI Port
Display Port	(1) Display Port
Power Supply	<ul style="list-style-type: none"> <li>• 19 V, 90 W Power Supply option</li> <li>• 24 V, 150 W Power Supply option</li> </ul>
Power Cords	<ul style="list-style-type: none"> <li>• USA Power Cord, 90 W</li> <li>• USA Power Cord, 150 W</li> <li>• UK Power Cord, 90 W</li> <li>• UK Power Cord, 150W</li> <li>• EU Power Cord, 90 W</li> <li>• EU Power Cord, 150 W</li> <li>• Australia Power Cord, 90W</li> <li>• Australia Power Cord, 150W</li> <li>• China Power Cord, 90 W</li> <li>• China Power Cord, 150 W</li> <li>• India Power Cord, 90 W</li> </ul>
Dimensions (L x W x H) (Countertop envelope through tilt angle)	346 mm x 375 mm x 366 mm (13.6 in. x 14.8 in. x 14.4 in.) <b>Note:</b> POS with C730 customer display length is 513 mm (20.19 in.)
Base Dimension (L x W)	231 mm x 228 mm (9.10 in. x 8.98 in.)
Tilt Angle	20° to 127° from vertical
Terminal Weight with Table Top Tilt Stand	6.44 kg (14 lbs)
Shipping Weight	9.21 kg (20.3 lbs)
Operating Temperature	0°C – 40°C (32°F – 104°F )
Storage Temperature	-10°C – 50°C (14°F – 122°F ) <b>Note:</b> Must be in original packaging material in a humidity and temperature controlled environment.
Humidity	5% to 85%, non–condensing
Environmental Compliance	RoHs, WEEE
EMI Certifications	FCC Class A, CE, C-Tick
Safety Certifications	TUV, CB Scheme

# Label Locations



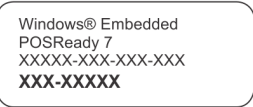
Certification Label



Model Number Label



COA Label



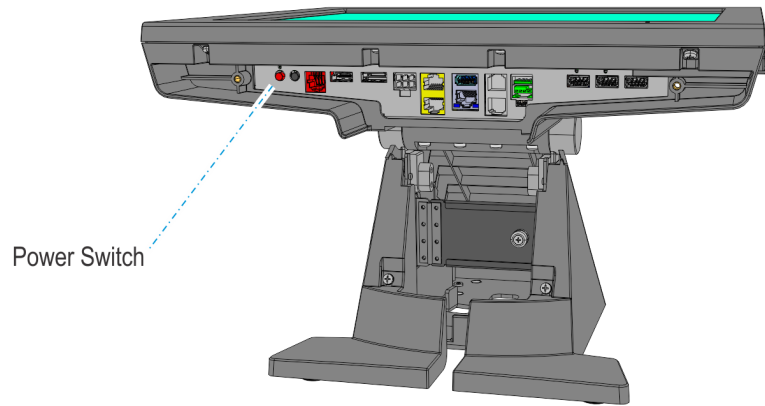
Serial Number Label



# Operator Controls

## Power Switch

The Power Switch is located as shown below.



60547

---

## Chapter 2: Hardware Installation

---

### Installation Restrictions

- Install the NCR P1532 POS near an electrical outlet that is easily accessible. Use the power cord as a power disconnect device.
- Do not permit any object to rest on the power cord. Do not locate the NCR P1532 POS where the power cord can be walked on.
- Use a grounding strap or touch a grounded metal object to discharge any static electricity from your Body before servicing the NCR P1532 POS.



**Warning:** This unit contains hazardous voltages and should only be serviced by qualified service personnel.



**Caution:** Do not connect or disconnect the transaction printer while the terminal is on. This can result in system or printer damage.

### Installation Notes

#### Cable Restraint

The P1532 includes a cable management system with cable door to prevent accidental disconnects and tampering. The door is opened, peripheral connections are made, the door is closed, and then cables are then routed through the slot in the base.

#### Footprint

An area of no less than 16" inches square is necessary to properly install a P1532 unit with MSR and side module. This will accommodate the unit as well as its associated mounting hardware. For customer display attached, see user guide for specific dimensions.

## Power

For tilt stand option, the P1532 has an integrated 19 V, 90 W power supply rated for 110 V and 240 V (Auto-sensing), 50 Hz or 60 Hz located in the base. With the powered USB 24 V option, the power supply is a 24V, 150 W external power brick rated for 110 V and 240 V (auto-sensing), 50Hz or 60Hz. Source power is drawn from a regular AC wall outlet. The electronics are “universal” – that is, they will function when connected to standard wall outlets in most countries around the world. For use in locales other than North America, special wall outlet adapters or cables will be required. For international configurations of the P1532, typically the country specific power cord is ordered separately.

## Moisture

The P1532 units should not be installed in areas where they might be exposed to direct water spray. P1532 units are not meant for outdoor installation.

## Touch Screen Cleaning

Use water or a standard glass cleaner (non-ammonia) with soft microfiber cloth to clean touch screen. Spray onto cloth first before wiping screen to prevent liquid from running down the glass and onto bezel.

Chemicals or solvents to avoid:

- Alcohol-based agents
- Ammonia
- Bleaching agents
- De-greasing agents
- Sanitizing agents

## Magnetic Strip Reader (MSR) Cleaning

Periodically, the MSR may need to be cleaned depending on usage. Pre-saturated MSR cleaning cards can be ordered from NCR (50/box) using part number 1666-K024.

Otherwise, wrap a card with a saturated paper towel of glass cleaner and swipe gently to clean reader head.

## Biometric Cleaning

Periodically, the biometric reader may need to be cleaned depending on usage. For this optical reader, it is recommended to apply the sticky side of a piece of adhesive cellophane tape to the window, and then peel it away. This works best and avoids chemicals which may damage the material. An alternative is to use any type of household cleaner, such as Formula 409, Fantastic, Windex, etc. Use a soft rag, cotton swab, or something non-abrasive to gently clean the reader surface. Do not use alcohol based cleaners. Always spray the cleaner on the rag or swab first to avoid liquid pooling around the reader. Remove the excess liquid.

Do not use chlorine based cleaners, such as Clorox bleach, non-chlorine bleach, or chlorine based bathroom / mildew cleaners. Also, do not use solvents such as acetone, MEK, TCE, paint thinner, or turpentine. The power should be removed from the terminal prior to cleaning.

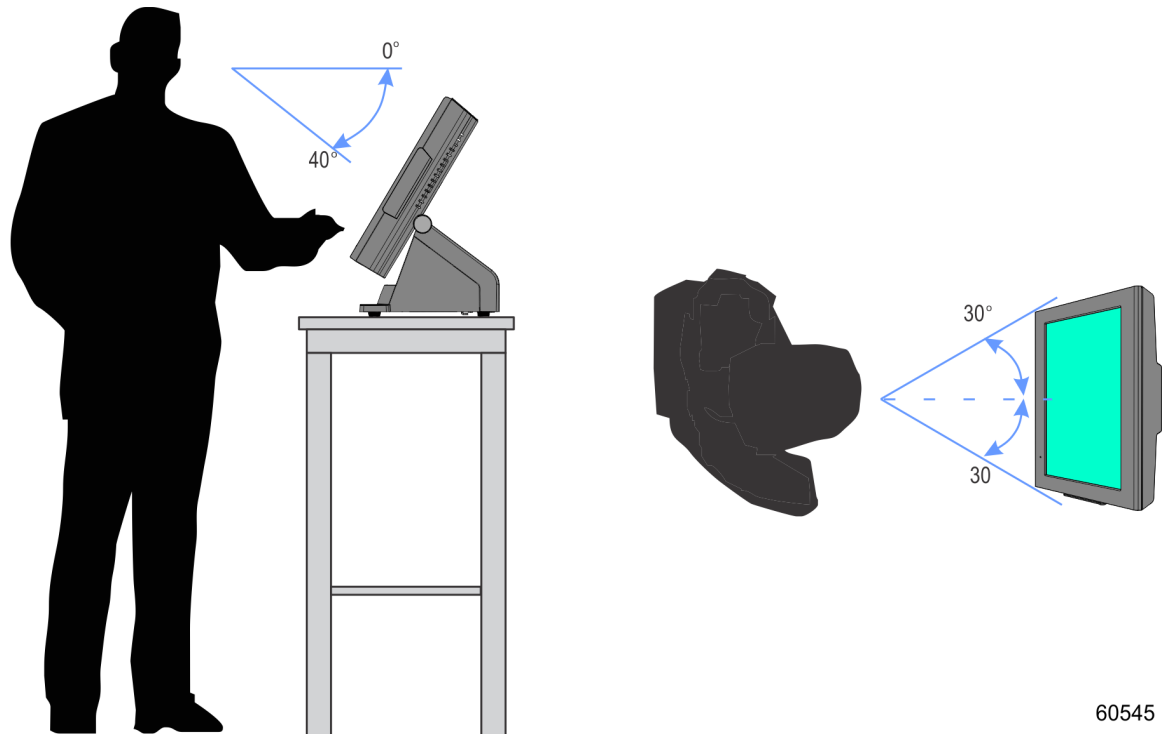
## Hardware Platform Drivers

Platform drivers for the P1532 POS are available on <http://www5.ncr.com/support/>

## Ergonomic Workplace

The NCR P1532 POS has a high brightness LCD with an anti-glare screen but for best results please observe the following when considering the terminal workplace.

- Avoid direct glaring and reflective glaring light. Locate the terminal in a controlled luminance surrounding. When installed next to windows orient the terminal so it does not reflect the outside light.
- If possible, avoid reflective glaring caused by electric light sources.
- Position the terminal for ideal viewing angles.



60545

## Installing the Terminal

The terminal can be mounted using a variety of mounts.

- Table Top Tilt Stand (7734–F170)
- P-Series Stand (7734–F172)
- Wall Mount (7754–K312)
- Pole Mount (7754–K313)

This chapter explains how to perform an "Out-of-box" installation of an NCR P1532 POS configured with the Table Top Tilt Stand and how to connect optional peripheral devices. For installation procedures for the other mounting options see their associated kit instructions.

The NCR P1532 POS comes fully assembled and ready to use. All that is required is to install the power supply, connect the LAN Cable and peripheral device cables.



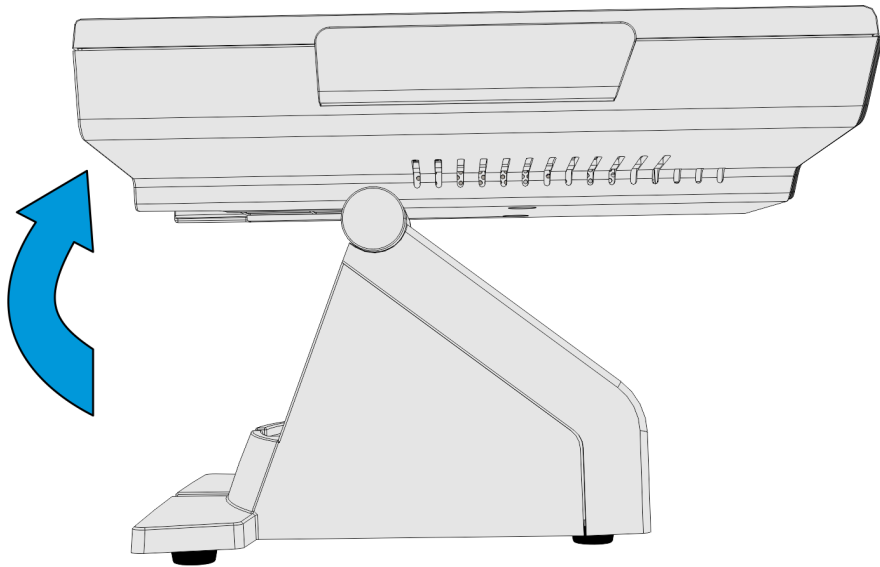
## Installing the Power Supply



**Caution:** The P1532 terminal requires the NCR 19 V or 24 V power supply that is shipped with the terminal. Use of other power supply may cause damage to the unit. Do not connect or disconnect the 19 V or 24 V Power Cable from the terminal with the AC Power Cord still connected to an AC outlet.

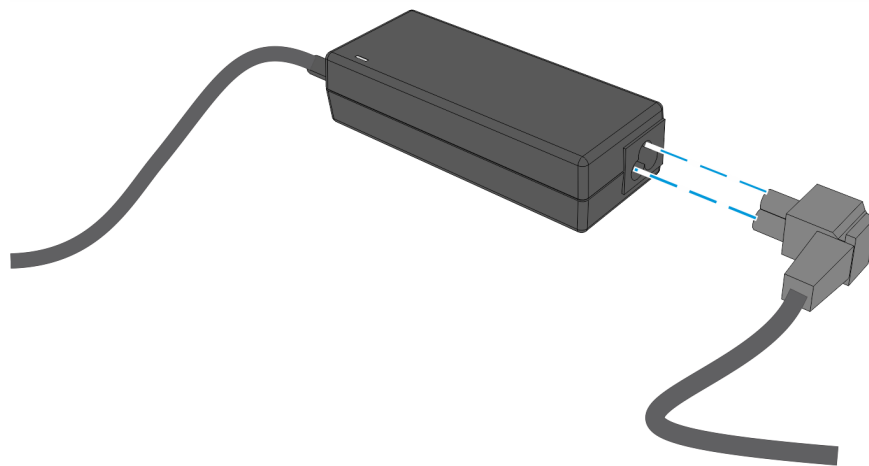
To install the 19V power supply inside the terminal, follow these steps:

1. Unpack the terminal in the desired location.
2. Pivot the display toward the back.



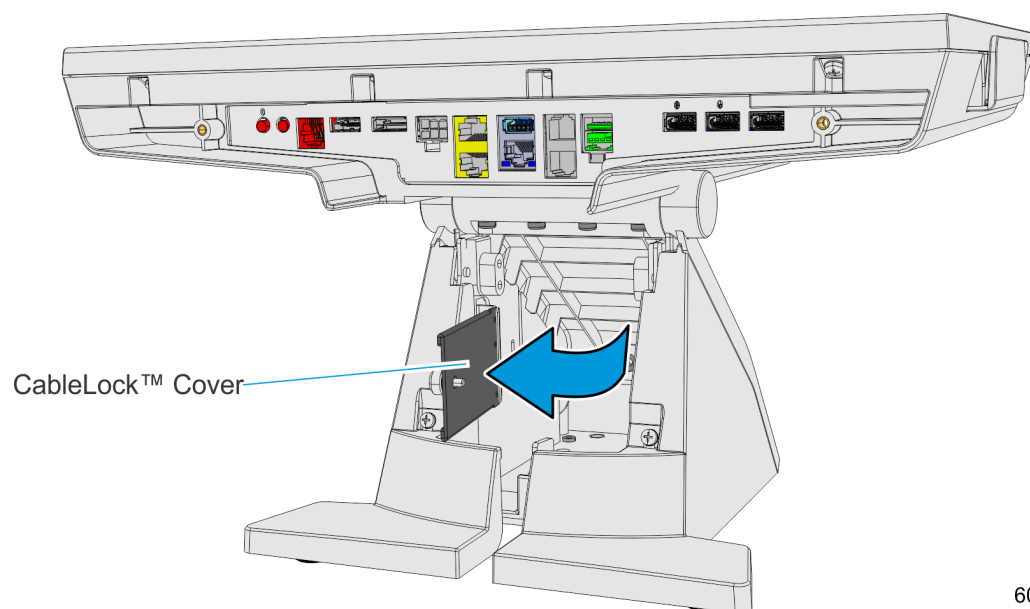
60553

3. Attach the AC power cord to the power brick.



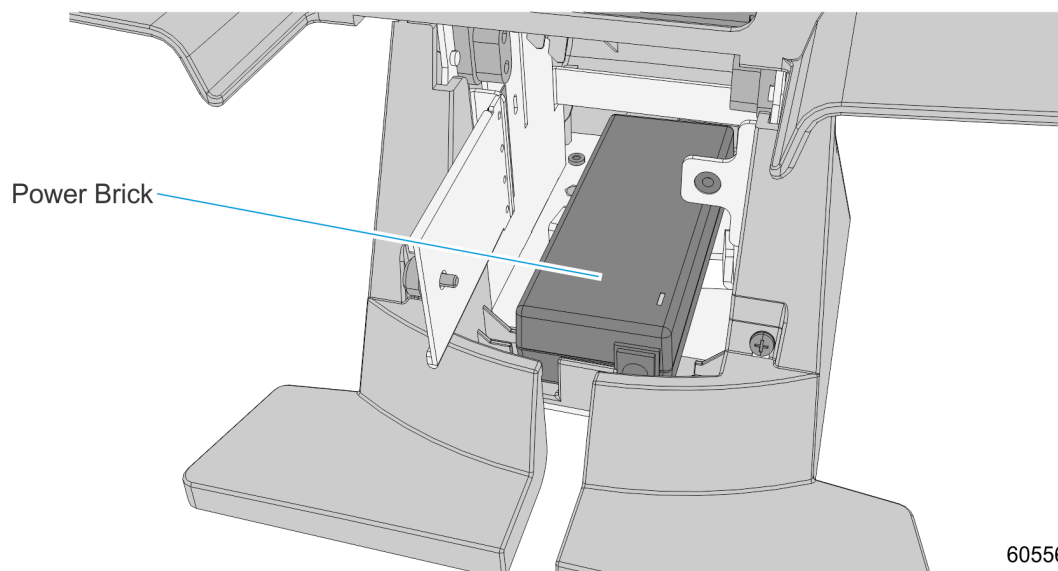
60554

4. Open the CableLock™ Cover.



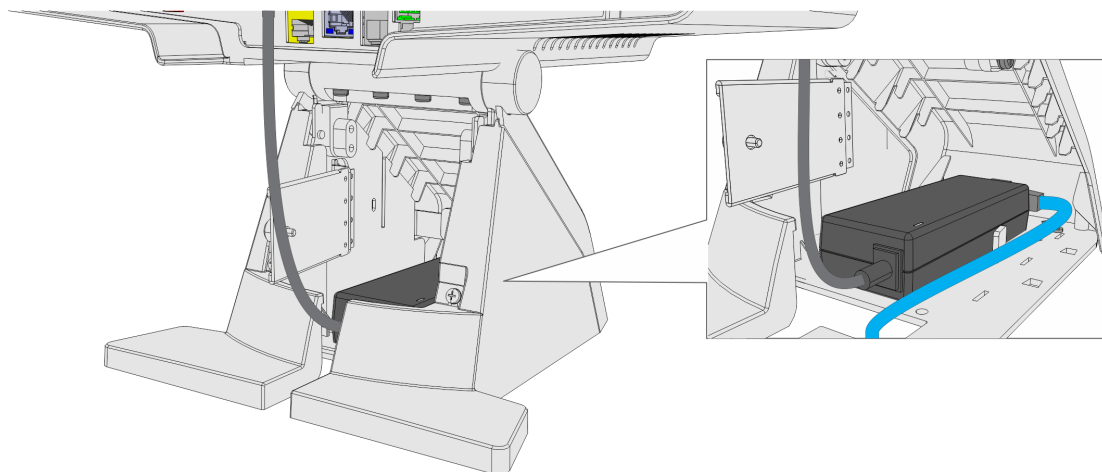
60555

5. Slide and install the power brick to the base. Ensure that the power brick's label is facing down.



60556

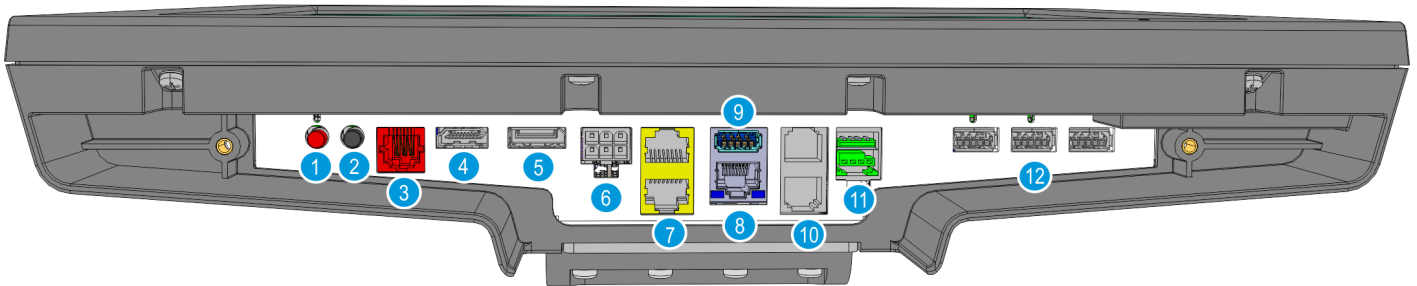
6. Route the power cable to the left side of the power brick with the cable routing down the opening at the base of the terminal.



60557

## Connecting the Peripheral Cables

- Connect the peripheral cables to the I/O Panel.



1 – Power Button  
2 – Recovery Button  
3 – RJ12 Cash Drawer  
4 – HDMI

5 – Display Port  
6 – Power In  
7 – RJ45 Serial Port (2)  
8 – Ethernet Port

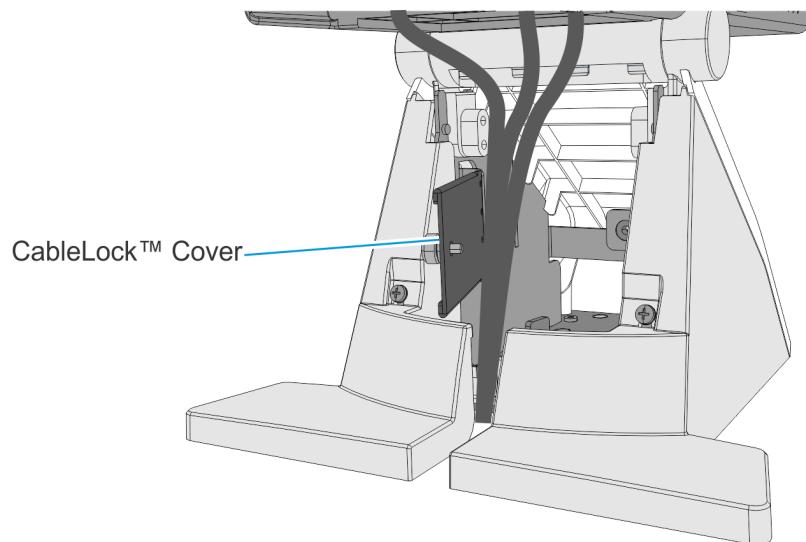
9 – USB 3.0  
10 – RJ12 Serial Port (2)  
11 – USB 2.0 + 12V Power  
12 – USB 3.0 (3)

60550

## Cable Routing

Cables are routed behind the CableLock™ Cover and down through the stand.

1. With the CableLock™ Cover opened, route the cables down through the opening in the base of the stand.



60552

2. Close the CableLock™ Cover and secure it with the Thumbscrew.

## Connecting AC Power

1. Connect the Power Supply cable to the DC Power connector on the terminal.
2. Connect the AC Power Cord to an AC outlet.

### Disconnecting the Power Cable

The Power Cable connector locks into position when connected to the terminal and cannot be removed by simply pulling on the cable. To remove it you must slide the outside housing out from the terminal to unlock it and then pull it out of the terminal connector.

## Connecting to a Network

Most business configurations require you to connect your P1532 system to a network. Connecting to a network enables you to communicate with other systems and devices also on the network, and depending on your business' configuration, may allow you to connect to the Internet.

To connect the P1532 terminal to a network, plug the 10/100/1000 Ethernet cable into the port labeled NETWORK on the bottom panel. The other end of the 10/100/1000 Ethernet cable should be connected into your network hub.



**Note:** You may need to consult with your business' IT (information technology) representative to determine whether you have a network connection available, and to locate the network hub to connect to your P1532.

## Starting Up the P1532 Terminal

In order to run your operating system and access your software and data, you must start up the P1532 platform. To start up the P1532, complete the following procedure:

1. Simply plug the power cord into an electrical outlet. The system automatically turns on once plugged into the outlet.

The system installs the system devices, system settings, and then reboots to continue setup. Complete the System Setup. This varies from OS to OS but the following is typical.

2. The initial setup procedures are performed.
  - Starting Windows
  - Preparing the computer for the first time
  - Checking video performance
3. Accept the **License Terms**.



**Note:** Depending on your installed operating system and your selected settings, your system will vary in the amount of time it takes to boot up.

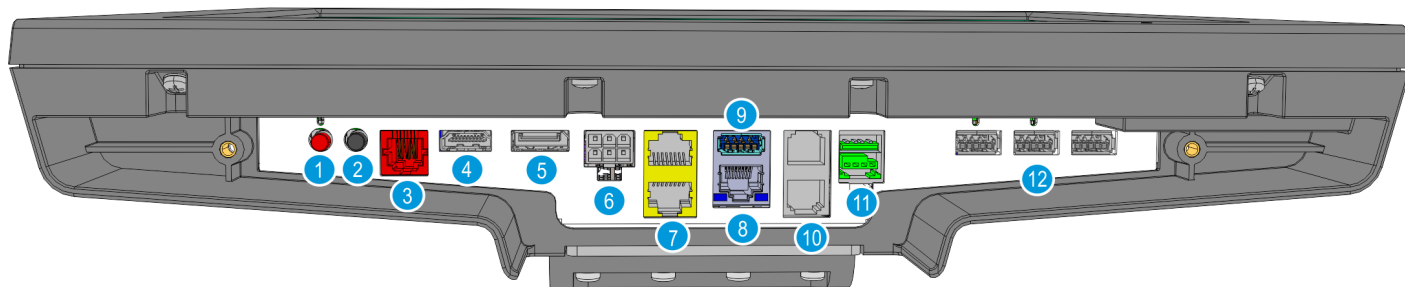
## Identifying the MAC Address

To identify the MAC address of the POS Terminal:

1. Run the command prompt.
2. Type **ipconfig/all** and press **Enter**. The *Physical Address* is the terminal's MAC Address.

## Using External Connectors

In order to use the P1532 system to run your business' software, you can set up several peripheral components. The P1532 is compatible with standard PC equipment, including a USB mouse, USB keyboard, printer, speakers, network connectivity, as well as any other devices that can be supported by your operating system.



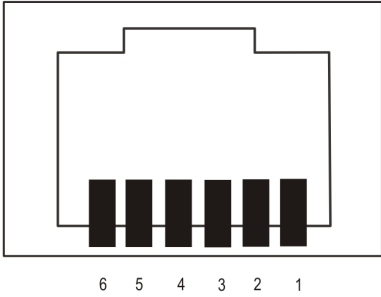
- 1 – Power Button
- 2 – Recovery Button
- 3 – RJ12 Cash Drawer
- 4 – HDMI

- 5 – Display Port
- 6 – Power In
- 7 – RJ45 Serial Port (2)
- 8 – Ethernet Port

- 9 – USB 3.0
- 10 – RJ12 Serial Port (2)
- 11 – USB 2.0 + 12V Power
- 12 – USB 3.0 (3)

## RJ12 Serial Port

The RJ12 serial port is a 6-pin RJ12 connector. Each RJ12 port is capable of supplying 12V at 500mA max.

Pin Diagram	Pin	Signal Name
<div><p>*FRONT VIEW</p><p>6 5 4 3 2 1</p><p><small>*Front view looking into the connector.</small></p></div>	1	POWER/RTS
	2	GND
	3	TX
	4	RX
	5	GND
	6	CTS

### RJ12 Adapter Kits

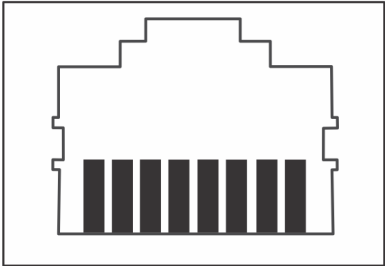
If a peripheral device requires a different connector to connect to the P1532 POS terminal serial RJ12 connector, order the following adapter kits:

RJ12 Adapter Kits	
1639-K159	DB9M to RJ12 Adaptor (CN100381)
1639-K072	6 ft RJ12 cable (CB10548)
1639-K401	RJ12M to RJ45F Remote Serial Printer Converter Dongle



## RJ45 Serial Port

The RJ45 port is an 8-pin modular jack connector. Maximum power capability is 0.5A on the 12V/RTS pin and 0.5A on the 5V/DTR pin from this port. The power output from this port is protected by a current-limiting power switch.

Pin Diagram	Pin	Signal Name
<div><p>*FRONT VIEW</p><p>8 7 6 5 4 3 2 1</p><p><i>*Front view looking into the connector.</i></p></div>	1	DSR
	2	DCD
	3	DTR/5V
	4	GND
	5	RXD
	6	TXD
	7	CTS
	8	RTS/12V

### RJ45 Adapter Kits

If a peripheral device requires a different connector to connect to the P1532 POS terminal serial RJ45 connector, order the following adapter kits:

RJ45 Adapter Kits	
1639-K332	RJ45 to DB25 Adapter Cable 1.85m
1639-K333	RJ45 to DB9 Adapter Cable 1.85m
1639-K400	RJ45 to HSR RJ12 Serial Coverter Dongle
1639-K410	RJ45M to RJ45F Remote Serial Printer Converter Dongle

# LAN

The 7761 Motherboard provides 10/100/1000 Base T Ethernet support using Realtek RTL8111F controller. The 7761 Motherboard supports Wake on LAN. The connector features an integrated magnetic module and 2 LEDs. The LED on the left is yellow and indicates Link/Activity at 1GBit speed when lit/flashing. The LED on the right is green and indicates Link/Activity at 10/100Mbit speed when lit/flashing.

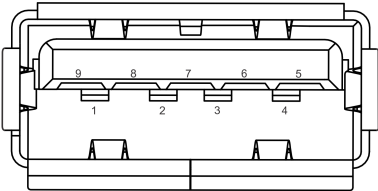
Pin	Signal Name
1	TD0+
2	TD0-
3	TD1+
4	TD1-
5	TD2+
6	TD2-
7	TD3+
8	TD3-
9	FRAME GND
10	FRAME GND

## LAN Cable Kit

LAN Cable Kit	
1432-C046-0030	POS; 10/100/1000 CAT 5E Ethernet Cable (ANSI compliant!; 8-wire

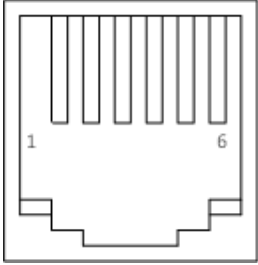
## USB 3.0 Compliant Ports

The 7734 Motherboard provides 4 USB 3.0 compliant ports. Each USB port is capable of supplying 5V at 900mA max.

Pin Diagram	Pin	Signal Name
	1	VBUS
	2	D-
	3	D+
	4	GND
	5	StdA_SSRX-
	6	StdA_SSRX+
	7	GND_DRAIN
	8	StdA_SSTX-
	9	StdA_SSTX+
	Shell	Shield

## Cash Drawer (CD) Port

A single 6-position RJ12 connector (Molex 44248-0065 or NCR approved equivalent) is used.

Pin Diagram	Pin	Signal Name
	1	LOGIC GND
	2	SOLENOID A
	3	OPEN/CLOSE STATUS
	4	+24V
	5	SOLENOID B
	6	POWER GND

### Cash Drawer Cable Kits

The terminal supports a 2-drawer configuration with a Dual Cash Drawer Cable. Connect this cable to the terminal or transaction printer cash drawer connector.



**Note:** When connecting a single 12 V legacy cash drawer, the 1432-C517-0009 cable is required to be used.

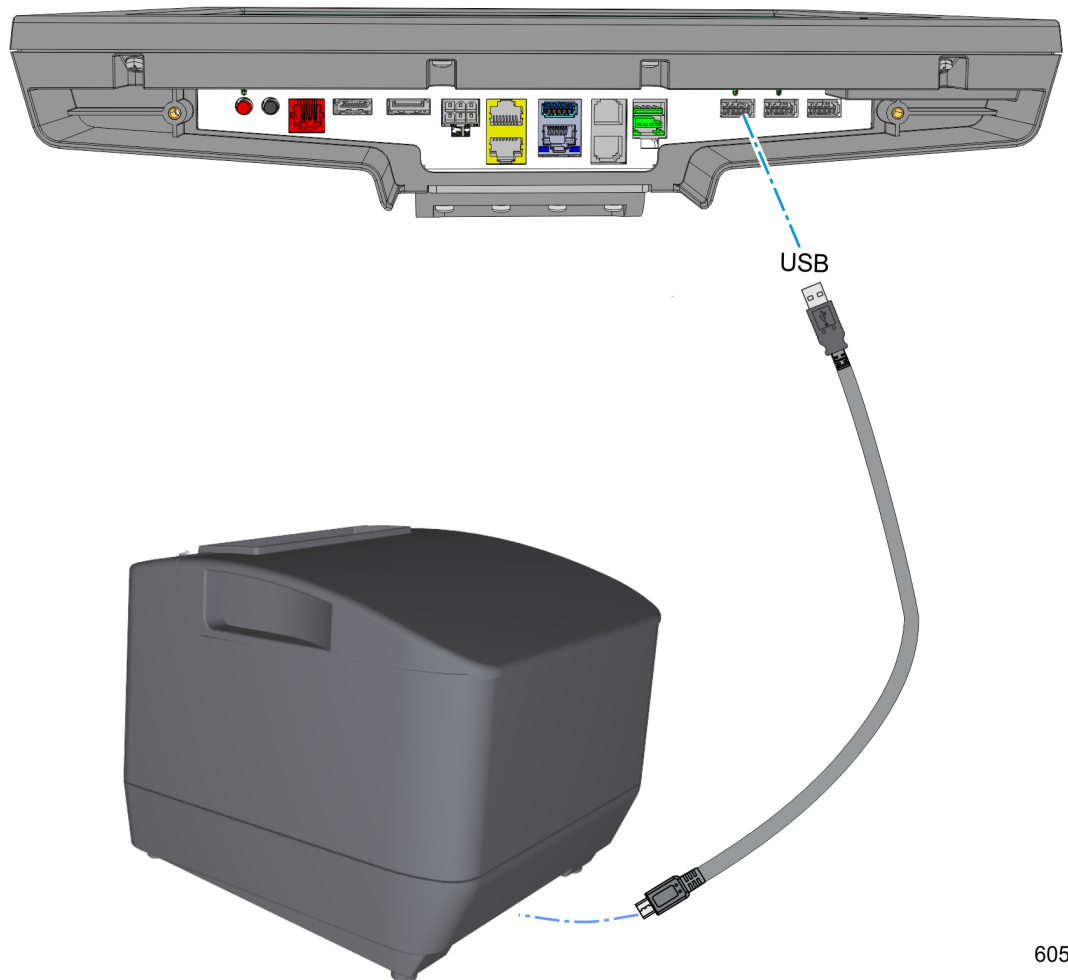


**Caution:** The two cables look very similar. Make sure you use the correct one. Connecting the wrong cable can cause system damage.

Cash Drawer Cable Kits	
1432-C516-0009 (24V)	24V Cash Drawer Cable Splitter
1432-C517-0009 (12V)	12V Cash Drawer Cable Splitter

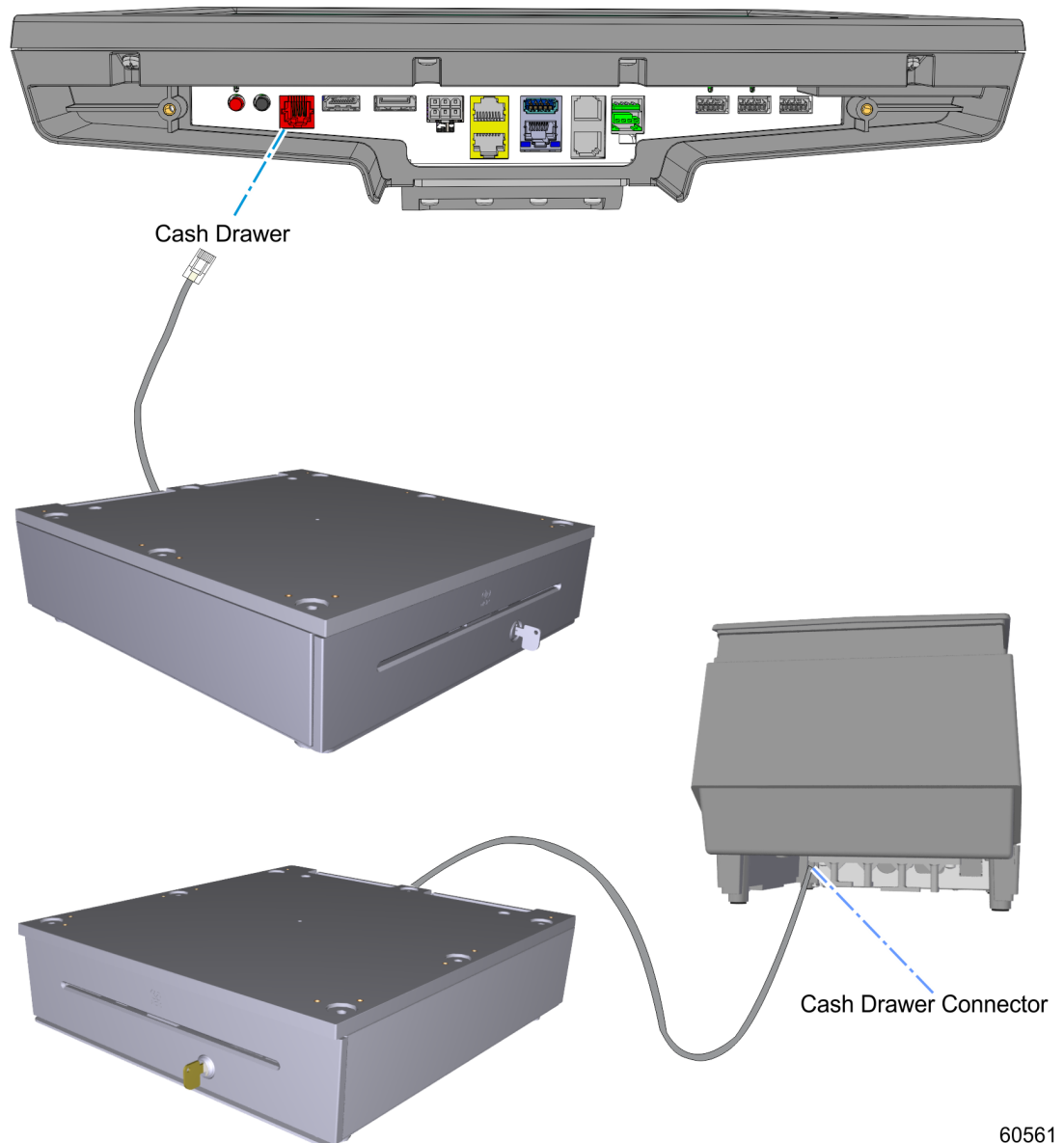
## Installing a Transaction Printer

Connect the printer to the USB port on the terminal.



## Installing a Cash Drawer

The Cash Drawer can be connected to the Cash Drawer connector or to the transaction printer.



## Second Cash Drawer Cable Connection

The terminal supports a 2-drawer configuration with a Dual Cash Drawer Cable. Connect this cable to the terminal or transaction printer cash drawer connector.

There are two versions of the Dual Cash Drawer Cable:

- 1432-C516-0009 (24 V)
- 1432-C517-0009 (12 V)



**Note:** When connecting a single 12 V legacy cash drawer, the 1432-C517-0009 cable is required to be used.



**Caution:** The two cables look very similar. Make sure you use the correct one. Connecting the wrong cable can cause system damage.

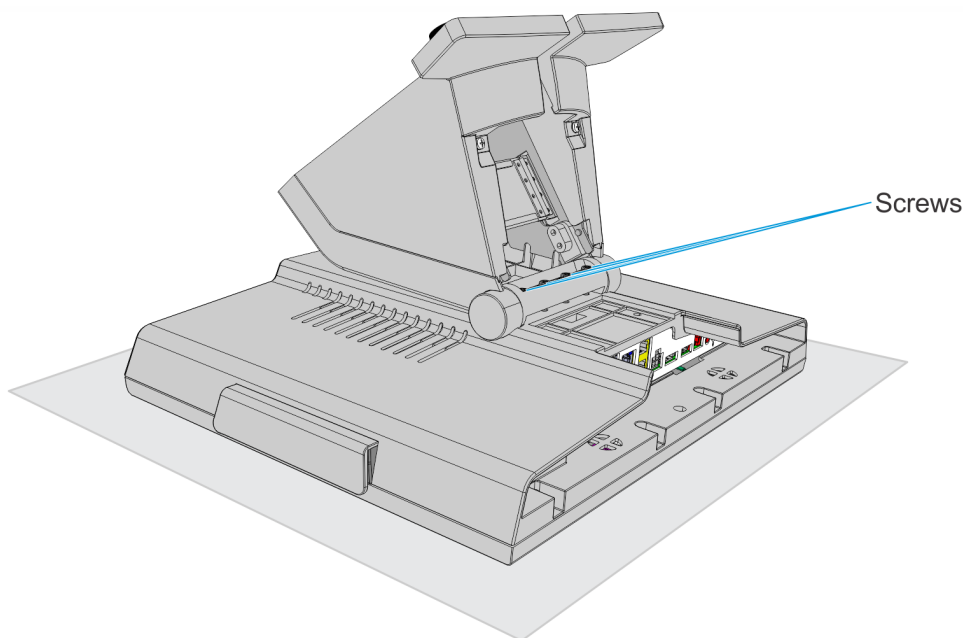
## Removing Top Assembly

1. Unplug power and cables.
2. Lay the terminal face down on a flat surface.



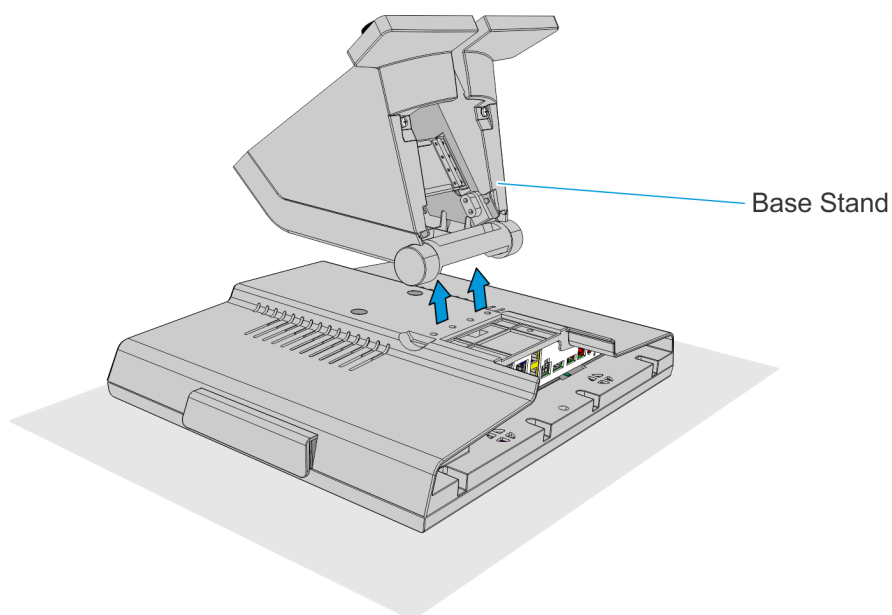
**Caution:** Always use a soft material (cloth, foam) to protect the display screen when placing the terminal face down.

3. Remove the screws (4) that secure the base stand to the display.



60558

4. Pull the base stand off the display slowly.



60559



---

## Chapter 3: Touch Screen Calibration

---



**Note:** Only units with resistive touch screens need to be calibrated. PCap displays do not require calibration.

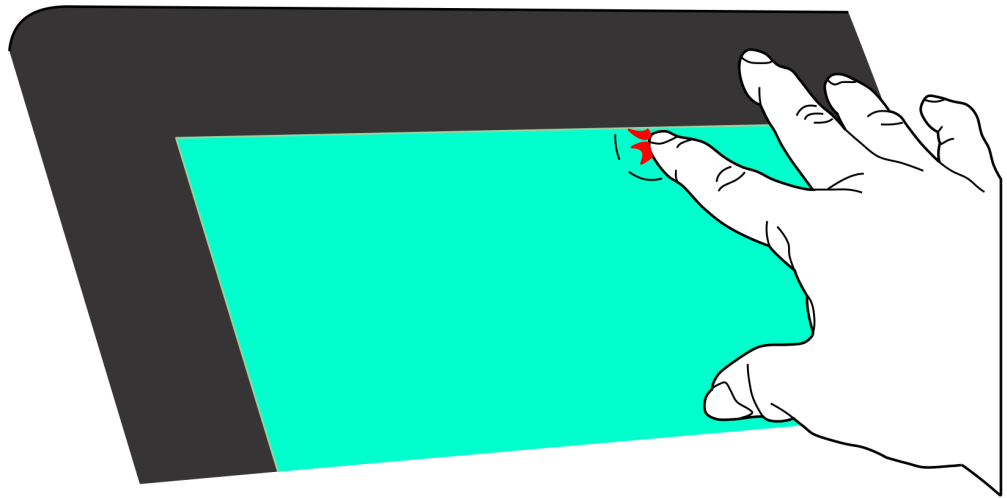
### Proper Touch Screen Methods

Before performing the calibration procedure please observe the following guidelines for proper/improper methods of touching the screen.

- Face the monitor directly.
- Perform the calibration in the position (sitting or standing) that you normally expect to use the touch screen.
- Touch the calibration target firmly and precisely with your fingertip. During calibration, be careful to keep your fingernails and other fingers away from the touch screen as you touch each target.
- The hand and calibration finger should be perpendicular (straight up) from the touch-screen during touch down and removal of the calibration finger. Keep the other fingers closed and away from the touch-screen.



- Do NOT touch the bezel with your other fingers.

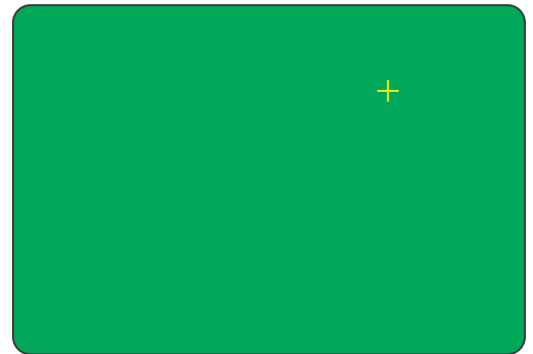
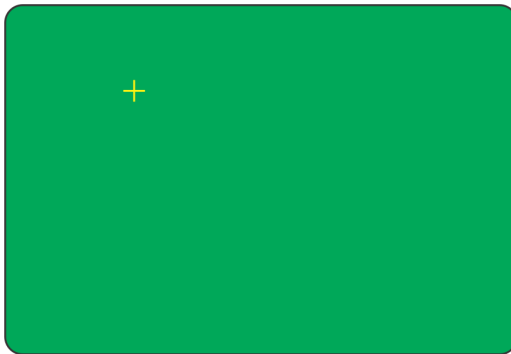


32835

# Calibrating the Touch Screen

## Resistive Touch Screen Calibration

1. Run the calibration program.
  - a. From the Start Menu, open **Control Panel** and select **Radiant Hardware Settings**.
  - b. Select the **Touch** tab.
  - c. Press the **Calibrate Touch Screen** button.
2. Touch the center of the cross-hair target. When the target is touched, it disappears and another target appears.



32860

3. Repeat the procedure for each target as they appear.

---

## Appendix A: Product IDs

---

### UPP Configurations

Included below is a current list of active and in-process PID configurations for the P1532 POS. Please refer to the Description Key for the abbreviated information that defines the feature content included in each configuration. Note that PIDs ending in –8800 indicate a U.S. configuration and PIDs ending in –8801 indicate an international configuration.

UPP Description Key	
Customer Display	<ul style="list-style-type: none"><li>• <b>2x20</b> = 2x20 integrated in head</li><li>• <b>C730</b> = C730 customer display integrated to base</li><li>• <b>C730TM</b> = C730 customer display integrated to base with touch and MSR</li><li>• <b>C730TMS</b> = C730 customer display integrated to base with touch, MSR, and scanner</li></ul>
Memory	<ul style="list-style-type: none"><li>• <b>4GB RAM</b> = 4GB DDR3L memory</li><li>• <b>8GB RAM</b> = 8GB DDR3L memory</li></ul>
Storage	<ul style="list-style-type: none"><li>• <b>32GB</b> = 32GB Solid state drive</li><li>• <b>64GB</b> = 64GB Solid state drive</li></ul>
Power Cord (All units shipped with 90W US power cord unless specified.)	<ul style="list-style-type: none"><li>• <b>150W</b> = 150W power supply and cord (External)</li><li>• <b>EU Cord</b> = 90W EU power cord substituted for US power cord</li></ul>
MSR Feature	<ul style="list-style-type: none"><li>• <b>MSR</b> = 3-Track Encrypting MSR</li><li>• <b>MBlank</b> = No MSR module</li></ul>
Expansion Options	<ul style="list-style-type: none"><li>• <b>PUSB</b> = 24v powered USB Add-in Card</li><li>• <b>RJ12</b> = 2xRJ12 powered serial ports Add-in Card</li></ul>
Touch Screen	<ul style="list-style-type: none"><li>• <b>Res</b> = 15" screen size with resistive touch</li><li>• <b>SCAP</b> = 15" screen size with surface capacitive touch</li></ul>
Operating System	<ul style="list-style-type: none"><li>• <b>WEPR7-32bit</b> = POSReady 7 (32-bit)</li><li>• <b>WEPR7-64bit</b> = POSReady 7 (64-bit)</li></ul>

### UPP Description Key

Mounting Feature  
(All units shipped with Tilt  
Stand unless specified.)

- **XB** = No Stand, Head Only

PID	Description
7734-0000-8800	P1532 Res 32GB 4GB RAM WEPR7-32bit MSR
7734-0001-8800	P1532 Res 64GB 4GB RAM WEPR7-64bit MSR
7734-0002-8800	P1532 Res 64GB 8GB RAM WEPR7-64bit MSR
7734-0003-8800	P1532 Res 32GB 4GB RAM WEPR7-32bit MSR 2x20
7734-0004-8800	P1532 Res 64GB 4GB RAM WEPR7-64bit MSR 2x20
7734-0005-8800	P1532 Res 64GB 8GB RAM WEPR7-64bit MSR 2x20
7734-0008-8800	P1532 Res 32GB 4GB RAM WEPR7-32bit MSR C730
7734-0009-8800	P1532 Res 64GB 4GB RAM WEPR7-64bit MSR C730
7734-0010-8800	P1532 Res 64GB 8GB RAM WEPR7-64bit MSR C730
7734-0011-8800	P1532 Res 32GB 4GB RAM WEPR7-32bit MSR C730TM
7734-0012-8800	P1532 Res 64GB 4GB RAM WEPR7-64bit MSR C730TM
7734-0013-8800	P1532 Res 32GB 4GB RAM WEPR7-32bit MSR RJ12
7734-0016-8800	P1532 Res 32GB 4GB RAM WEPR7-32bit MSR XB
7734-0017-8800	P1532 Res 64GB 4GB RAM WEPR7-64bit MSR XB
7734-0100-0018	P1532 Res 32GB 4GB RAM Win10E-32bit MSR
7734-0100-0019	P1532 Res 64GB 4GB RAM Win10E-64bit MSR
7734-0100-0020	P1532 Res 64GB 8GB RAM Win10E-64bit MSR
7734-0100-0021	P1532 Res 32GB 4GB RAM Win10E-32bit MSR 2x20
7734-0100-0022	P1532 Res 64GB 4GB RAM Win10E-64bit MSR 2x20
7734-0100-0023	P1532 Res 64GB 8GB RAM Win10E-64bit MSR 2x20
7734-0100-0024	P1532 Res 32GB 4GB RAM Win10E-32bit MSR C730
7734-0100-0025	P1532 Res 64GB 4GB RAM Win10E-64bit MSR C730
7734-0100-0026	P1532 Res 64GB 8GB RAM Win10E-64bit MSR C730
7734-0100-0027	P1532 Res 32GB 4GB RAM Win10E-32bit MSR C730TM
7734-0100-0028	P1532 Res 64GB 4GB RAM Win10E-64bit MSR C730TM

PID	Description
7734-0100-0029	P1532 Res 32GB 4GB RAM Win10E-32bit MSR RJ12
7734-0100-0030	P1532 Res 32GB 4GB RAM Win10E-32bit MSR XB
7734-0100-0031	P1532 Res 64GB 4GB RAM Win10E-64bit MSR XB
7734-0100-0044	P1532 Res 16GB 4GB RAM WEPR7-32bit MSR NS
7734-0100-0045	P1532 Res 16GB 4GB RAM WEPR7-32bit MSR NS 2x20
7734-0100-0070	P1532 Res 32GB 4GB RAM WEPR7-32bit MSR BIO
7734-0100-0071	P1532 Res 64GB 4GB RAM WEPR7-64bit MSR BIO
7734-0100-0072	P1532 Res 32GB 4GB RAM WEPR7-32bit MSR BIO 2x20
7734-0100-0073	P1532 Res 64GB 4GB RAM WEPR7-64bit MSR BIO 2x20
7734-0100-0074	P1532 Res 32GB 4GB RAM Win10E-32bit MSR BIO
7734-0100-0075	P1532 Res 64GB 4GB RAM Win10E-64bit MSR BIO
7734-0100-0076	P1532 Res 64GB 8GB RAM Win10E-64bit MSR BIO
7734-0100-0077	P1532 Res 32GB 4GB RAM Win10E-32bit MSR BIO 2x20
7734-0100-0078	P1532 Res 64GB 4GB RAM Win10E-64bit MSR BIO 2x20
7734-0100-0079	P1532 Res 64GB 8GB RAM Win10E-64bit MSR BIO 2x20
7734-0100-0080	P1532 Res 32GB 4GB RAM Win10E-32bit MSR BIO C730
7734-0100-0081	P1532 Res 64GB 4GB RAM Win10E-64bit MSR BIO C730
7734-0100-0082	P1532 Res 64GB 8GB RAM Win10E-64bit MSR BIO C730
7734-0100-0083	P1532 Res 32GB 4GB RAM Win10E-32bit MSR BIO C730TM
7734-0100-0084	P1532 Res 64GB 4GB RAM Win10E-64bit MSR BIO C730TM
7734-0100-0085	P1532 Res 32GB 4GB RAM Win10E-32bit MSR BIO RJ12
7734-0100-0086	P1532 Res 32GB 4GB RAM Win10E-32bit MSR BIO XB
7734-0100-0087	P1532 Res 64GB 4GB RAM Win10E-64bit MSR BIO XB
7734-0100-0088	P1532 Res 32GB 4GB RAM WEPR7-32bit MSR BIO No Pwr Cord
7734-0100-0089	P1532 Res 64GB 4GB RAM WEPR7-64bit MSR BIO No Pwr Cord
7734-0100-0090	P1532 Res 32GB 4GB RAM WEPR7-32bit MSR BIO 2x20 No Pwr Cord
7734-0100-0091	P1532 Res 64GB 4GB RAM WEPR7-64bit MSR BIO 2x20 No Pwr Cord
7734-0100-0092	P1532 Res 32GB 4GB RAM Win10E-32bit MSR BIO No Pwr Cord
7734-0100-0093	P1532 Res 64GB 4GB RAM Win10E-64bit MSR BIO No Pwr Cord

PID	Description
7734-0100-0094	P1532 Res 64GB 8GB RAM Win10E-64bit MSR BIO No Pwr Cord
7734-0100-0095	P1532 Res 32GB 4GB RAM Win10E-32bit MSR BIO 2x20 No Pwr Cord
7734-0100-0096	P1532 Res 64GB 4GB RAM Win10E-64bit MSR BIO 2x20 No Pwr Cord
7734-0100-0097	P1532 Res 64GB 8GB RAM Win10E-64bit MSR BIO 2x20 No Pwr Cord
7734-0100-0098	P1532 Res 32GB 4GB RAM Win10E-32bit MSR BIO C730 No Pwr Cord
7734-0100-0099	P1532 Res 64GB 4GB RAM Win10E-64bit MSR BIO C730 No Pwr Cord
7734-0100-0100	P1532 Res 64GB 8GB RAM Win10E-64bit MSR BIO C730 No Pwr Cord
7734-0100-0101	P1532 Res 32GB 4GB RAM Win10E-32bit MSR BIO C730TM No Pwr Cord
7734-0100-0102	P1532 Res 64GB 4GB RAM Win10E-64bit MSR BIO C730TM No Pwr Cord
7734-0100-0103	P1532 Res 32GB 4GB RAM Win10E-32bit MSR BIO RJ12 No Pwr Cord
7734-0100-0104	P1532 Res 32GB 4GB RAM Win10E-32bit MSR BIO XB No Pwr Cord
7734-0100-0105	P1532 Res 64GB 4GB RAM Win10E-64bit MSR BIO XB No Pwr Cord
7734-0100-0106	P1532 Res 32GB 4GB RAM WEPR7-32bit MSR No Pwr Cord
7734-0100-0107	P1532 Res 64GB 4GB RAM WEPR7-64bit MSR No Pwr Cord
7734-0100-0108	P1532 Res 32GB 4GB RAM WEPR7-32bit MSR 2x20 No Pwr Cord
7734-0100-0109	P1532 Res 64GB 4GB RAM WEPR7-64bit MSR 2x20 No Pwr Cord
7734-0100-0110	P1532 SCAP 32GB 4GB RAM WEPR7-32bit MSR No Pwr Cord
7734-0100-0111	P1532 SCAP 64GB 4GB RAM WEPR7-64bit MSR No Pwr Cord
7734-0100-0112	P1532 SCAP 32GB 4GB RAM WEPR7-32bit MSR 2x20 No Pwr Cord
7734-0100-0113	P1532 SCAP 64GB 4GB RAM WEPR7-64bit MSR 2x20 No Pwr Cord
7734-0100-0114	P1532 Res 64GB 8GB RAM Win10E-64bit MMSR 2x20
7734-0100-0115	P1532 Res 64GB 8GB RAM Win10E-64bit Mblank
7734-0100-0116	P1532 Res 128GB 8GB RAM Win10E-64bit MSR
7734-0100-0117	P1532 SCAP 128GB 8GB RAM Win10E-64bit MSR
7734-0100-0118	P1532 RES 128GB 8GB RAM WEPR7-64bit MSR
7734-0101-0046	P1532 Res 64GB 4GB RAM Win10E-64bit MBlank XB EU Cord
7734-0101-0047	P1532 Res 64GB 4GB RAM Win10E-64bit MSR XB EU Cord

PID	Description
7734-0101-0048	P1532 Res 64GB 4GB RAM Win10E-64bit MSR 2x20 XB EU Cord
7734-0101-0049	P1532 Res 64GB 4GB RAM Win10E-64bit MBlank 2x20 XB EU Cord
7734-0101-0050	P1532 Res 64GB 4GB RAM WEPR7-64bit MBlank XB EU Cord
7734-0101-0051	P1532 Res 64GB 4GB RAM WEPR7-64bit MSR XB EU Cord
7734-0101-0052	P1532 Res 64GB 4GB RAM WEPR7-64bit MSR 2x20 XB EU Cord
7734-0101-0053	P1532 Res 64GB 4GB RAM WEPR7-64bit MBlank 2x20 XB EU Cord
7734-0101-0054	P1532 Res 64GB 4GB RAM No OS MBlank XB EU Cord
7734-0101-0055	P1532 Res 64GB 4GB RAM No OS MSR XB EU Cord
7734-0101-0056	P1532 Res 64GB 4GB RAM No OS MSR 2x20 XB EU Cord
7734-0101-0057	P1532 Res 64GB 4GB RAM No OS MBlank 2x20 XB EU Cord
7734-0101-0058	P1532 Res 64GB 4GB RAM Win10E-64bit MBlank PStand EU Cord
7734-0101-0059	P1532 Res 64GB 4GB RAM Win10E-64bit MSR PStand EU Cord
7734-0101-0060	P1532 Res 64GB 4GB RAM Win10E-64bit MSR 2x20 PStand EU Cord
7734-0101-0061	P1532 Res 64GB 4GB RAM Win10E-64bit MBlank 2x20 PStand EU Cord
7734-0101-0062	P1532 Res 64GB 4GB RAM WEPR7-64bit MBlank PStand EU Cord
7734-0101-0063	P1532 Res 64GB 4GB RAM WEPR7-64bit MSR PStand EU Cord
7734-0101-0064	P1532 Res 64GB 4GB RAM WEPR7-64bit MSR 2x20 PStand EU Cord
7734-0101-0065	P1532 Res 64GB 4GB RAM WEPR7-64bit MBlank 2x20 PStand EU Cord
7734-0101-0066	P1532 Res 64GB 4GB RAM No OS MBlank PStand EU Cord
7734-0101-0067	P1532 Res 64GB 4GB RAM No OS MSR PStand EU Cord
7734-0101-0068	P1532 Res 64GB 4GB RAM No OS MSR 2x20 PStand EU Cord
7734-0101-0069	P1532 Res 64GB 4GB RAM No OS MBlank 2x20 PStand EU Cord
7734-0101-0070	P1532 Res 64GB 4GB RAM No OS MBlank 2n1 XB EU Cord
7734-0101-0071	P1532 Res 64GB 4GB RAM No OS MBlank 2n1 2x20 XB EU Cord
7734-0101-0072	P1532 Res 64GB 4GB RAM No OS MBlank 2n1 PStand EU Cord
7734-0101-0073	P1532 Res 64GB 4GB RAM No OS MBlank 2n1 2x20 PStand EU Cord
7734-0101-0074	P1532 Res 64GB 4GB RAM WEPR7-64bit MBlank 2n1 XB EU Cord



PID	Description
7734-0101-0075	P1532 Res 64GB 4GB RAM WEPR7-64bit MBlank 2n1 2x20 XB EU Cord
7734-0101-0076	P1532 Res 64GB 4GB RAM WEPR7-64bit MBlank 2n1 PStand EU Cord
7734-0101-0077	P1532 Res 64GB 4GB RAM WEPR7-64bit MBlank 2n1 2x20 PStand EU Cord
7734-0101-0078	P1532 Res 64GB 4GB RAM Win10E-64bit MBlank 2n1 XB EU Cord
7734-0101-0079	P1532 Res 64GB 4GB RAM Win10E-64bit MBlank 2n1 2x20 XB EU Cord
7734-0101-0080	P1532 Res 64GB 4GB RAM Win10E-64bit MBlank 2n1 PStand EU Cord
7734-0101-0081	P1532 Res 64GB 4GB RAM Win10E-64bit MBlank 2n1 2x20 PStand EU Cord
7734-0900-8800	Base Model Lead Unit PID for Resistive Touch
7734-0901-8800	P1532 Base Model Lead Unit PID for Resistive Touch BIO
7734-0902-8800	P1532 Base Model Lead Unit PID for Resistive Touch 2n1 Sign-In
7734-3000-8800	P1532 SCAP 32GB 4GB RAM WEPR7-32bit MSR
7734-3001-8800	P1532 SCAP 64GB 4GB RAM WEPR7-64bit MSR
7734-3002-8800	P1532 SCAP 32GB 4GB RAM WEPR7-32bit MSR 2x20
7734-3003-8800	P1532 SCAP 64GB 4GB RAM WEPR7-64bit MSR 2x20
7734-3006-8800	P1532 SCAP 32GB 4GB RAM WEPR7-32bit MSR C730
7734-3007-8800	P1532 SCAP 64GB 4GB RAM WEPR7-64bit MSR C730
7734-3008-8800	P1532 SCAP 32GB 4GB RAM WEPR7-32bit MSR C730TM
7734-3009-8800	P1532 SCAP 64GB 4GB RAM WEPR7-64bit MSR C730TM
7734-3010-8800	P1532 SCAP 32GB 4GB RAM WEPR7-32bit MSR RJ12
7734-3013-8800	P1532 SCAP 32GB 4GB RAM WEPR7-32bit MSR XB
7734-3014-8800	P1532 SCAP 64GB 4GB RAM WEPR7-64bit MSR XB
7734-3100-0032	P1532 SCAP 32GB 4GB RAM Win10E-32bit MSR
7734-3100-0033	P1532 SCAP 64GB 4GB RAM Win10E-64bit MSR
7734-3100-0034	P1532 SCAP 32GB 4GB RAM Win10E-32bit MSR 2x20
7734-3100-0035	P1532 SCAP 64GB 4GB RAM Win10E-64bit MSR 2x20
7734-3100-0036	P1532 SCAP 32GB 4GB RAM Win10E-32bit MSR C730

PID	Description
7734-3100-0037	P1532 SCAP 64GB 4GB RAM Win10E-64bit MSR C730
7734-3100-0038	P1532 SCAP 32GB 4GB RAM Win10E-32bit MSR C730TM
7734-3100-0039	P1532 SCAP 64GB 4GB RAM Win10E-64bit MSR C730TM
7734-3100-0040	P1532 SCAP 32GB 4GB RAM Win10E-32bit MSR RJ12
7734-3100-0041	P1532 SCAP 32GB 4GB RAM Win10E-32bit MSR XB
7734-3100-0042	P1532 SCAP 64GB 4GB RAM Win10E-64bit MSR XB
7734-3100-0043	P1532 SCAP 64GB 8GB RAM WEPR7-64bit MSR
7734-3100-0044	P1532 SCAP 32GB 4GB RAM WEPR7-32bit MSR BIO
7734-3100-0045	P1532 SCAP 64GB 4GB RAM WEPR7-64bit MSR BIO
7734-3100-0046	P1532 SCAP 32GB 4GB RAM WEPR7-32bit MSR BIO 2x20
7734-3100-0047	P1532 SCAP 64GB 4GB RAM WEPR7-64bit MSR BIO 2x20
7734-3100-0048	P1532 SCAP 32GB 4GB RAM Win10E-32bit MSR BIO
7734-3100-0049	P1532 SCAP 64GB 4GB RAM Win10E-64bit MSR BIO
7734-3100-0050	P1532 SCAP 32GB 4GB RAM Win10E-32bit MSR BIO 2x20
7734-3100-0051	P1532 SCAP 64GB 4GB RAM Win10E-64bit MSR BIO 2x20
7734-3100-0052	P1532 SCAP 32GB 4GB RAM Win10E-32bit MSR BIO C730
7734-3100-0053	P1532 SCAP 64GB 4GB RAM Win10E-64bit MSR BIO C730
7734-3100-0054	P1532 SCAP 32GB 4GB RAM Win10E-32bit MSR BIO C730TM
7734-3100-0055	P1532 SCAP 64GB 4GB RAM Win10E-64bit MSR BIO C730TM
7734-3100-0056	P1532 SCAP 32GB 4GB RAM Win10E-32bit MSR BIO XB
7734-3100-0057	P1532 SCAP 64GB 4GB RAM Win10E-64bit MSR BIO XB
7734-3100-0058	P1532 SCAP 64GB 8GB RAM WEPR7-64bit MSR BIO
7734-3100-0059	P1532 SCAP 32GB 4GB RAM WEPR7-32bit MSR BIO No Pwr Cord
7734-3100-0060	P1532 SCAP 64GB 4GB RAM WEPR7-64bit MSR BIO No Pwr Cord
7734-3100-0061	P1532 SCAP 32GB 4GB RAM WEPR7-32bit MSR BIO 2x20 No Pwr Cord
7734-3100-0062	P1532 SCAP 64GB 4GB RAM WEPR7-64bit MSR BIO 2x20 No Pwr Cord
7734-3100-0063	P1532 SCAP 32GB 4GB RAM Win10E-32bit MSR BIO No Pwr Cord

PID	Description
7734-3100-0064	P1532 SCAP 64GB 4GB RAM Win10E-64bit MSR BIO No Pwr Cord
7734-3100-0065	P1532 SCAP 32GB 4GB RAM Win10E-32bit MSR BIO 2x20 No Pwr Cord
7734-3100-0066	P1532 SCAP 64GB 4GB RAM Win10E-64bit MSR BIO 2x20 No Pwr Cord
7734-3100-0067	P1532 SCAP 32GB 4GB RAM Win10E-32bit MSR BIO C730 No Pwr Cord
7734-3100-0068	P1532 SCAP 64GB 4GB RAM Win10E-64bit MSR BIO C730 No Pwr Cord
7734-3100-0069	P1532 SCAP 32GB 4GB RAM Win10E-32bit MSR BIO C730TM No Pwr Cord
7734-3100-0070	P1532 SCAP 64GB 4GB RAM Win10E-64bit MSR BIO C730TM No Pwr Cord
7734-3100-0071	P1532 SCAP 32GB 4GB RAM Win10E-32bit MSR BIO XB No Pwr Cord
7734-3100-0072	P1532 SCAP 64GB 4GB RAM Win10E-64bit MSR BIO XB No Pwr Cord
7734-3100-0073	P1532 SCAP 64GB 8GB RAM WEPR7-64bit MSR BIO No Pwr Cord
7734-3100-0074	P1532 SCAP 64GB 8GB RAM WEPR7-64bit MSR No Pwr Cord
7734-3100-0075	P1532 Res 32GB 4GB RAM Win10E-32bit MSR No Pwr Cord
7734-3100-0076	P1532 Res 64GB 4GB RAM Win10E-64bit MSR No Pwr Cord
7734-3100-0077	P1532 Res 64GB 8GB RAM Win10E-64bit MSR No Pwr Cord
7734-3100-0078	P1532 Res 32GB 4GB RAM Win10E-32bit MSR 2x20 No Pwr Cord
7734-3100-0079	P1532 Res 64GB 4GB RAM Win10E-64bit MSR 2x20 No Pwr Cord
7734-3100-0080	P1532 Res 64GB 8GB RAM Win10E-64bit MSR 2x20 No Pwr Cord
7734-3100-0081	P1532 Res 32GB 4GB RAM Win10E-32bit MSR C730 No Pwr Cord
7734-3100-0082	P1532 Res 64GB 4GB RAM Win10E-64bit MSR C730 No Pwr Cord
7734-3100-0083	P1532 Res 64GB 8GB RAM Win10E-64bit MSR C730 No Pwr Cord
7734-3100-0084	P1532 Res 32GB 4GB RAM Win10E-32bit MSR C730TM No Pwr Cord
7734-3100-0085	P1532 Res 64GB 4GB RAM Win10E-64bit MSR C730TM No Pwr Cord
7734-3100-0086	P1532 Res 32GB 4GB RAM Win10E-32bit MSR RJ12 No Pwr Cord
7734-3100-0087	P1532 Res 32GB 4GB RAM Win10E-32bit MSR XB No Pwr Cord

PID	Description
7734-3100-0088	P1532 Res 64GB 4GB RAM Win10E-64bit MSR XB No Pwr Cord
7734-3100-0089	P1532 SCAP 32GB 4GB RAM Win10E-32bit MSR No Pwr Cord
7734-3100-0090	P1532 SCAP 64GB 4GB RAM Win10E-64bit MSR No Pwr Cord
7734-3100-0091	P1532 SCAP 32GB 4GB RAM Win10E-32bit MSR 2x20 No Pwr Cord
7734-3100-0092	P1532 SCAP 64GB 4GB RAM Win10E-64bit MSR 2x20 No Pwr Cord
7734-3100-0093	P1532 SCAP 32GB 4GB RAM Win10E-32bit MSR C730 No Pwr Cord
7734-3100-0094	P1532 SCAP 64GB 4GB RAM Win10E-64bit MSR C730 No Pwr Cord
7734-3100-0095	P1532 SCAP 32GB 4GB RAM Win10E-32bit MSR C730TM No Pwr Cord
7734-3100-0096	P1532 SCAP 64GB 4GB RAM Win10E-64bit MSR C730TM No Pwr Cord
7734-3100-0097	P1532 SCAP 32GB 4GB RAM Win10E-32bit MSR XB No Pwr Cord
7734-3100-0098	P1532 SCAP 64GB 4GB RAM Win10E-64bit MSR XB No Pwr Cord
7734-3100-0099	P1532 SCAP 64GB 8GB RAM Win10E-64bit MSR
7734-3100-0100	P1532 SCAP 64GB 8GB RAM Win10E-64bit MSR no Cord
7734-3100-0102	P1532 SCAP 128GB 8GB RAM Win10E-64bit MSR BIO 2x20
7734-3100-0103	P1532 SCAP 128GB 8GB RAM WEPR7-64bit MSR