

# Kit Instructions

NCR SelfServ™ 90 (7709) Kiosk Scanner Shroud  
R1.0 and R1.1



7709-K530  
Issue A



---

The product described in this book is a licensed product of NCR Corporation.

NCR is a registered trademark of NCR Corporation. NCR SelfServ™ is a trademark of NCR Corporation in the United States and/or other countries. Other product names mentioned in this publication may be trademarks or registered trademarks of their respective companies and are hereby acknowledged.

The terms HDMI and HDMI High-Definition Multimedia Interface, and the HDMI Logo are trademarks or registered trademarks of HDMI Licensing LLC in the United States and other countries.

Where creation of derivative works, modifications or copies of this NCR copyrighted documentation is permitted under the terms and conditions of an agreement you have with NCR, NCR's copyright notice must be included.

It is the policy of NCR Corporation (NCR) to improve products as new technology, components, software, and firmware become available. NCR, therefore, reserves the right to change specifications without prior notice.

All features, functions, and operations described herein may not be marketed by NCR in all parts of the world. In some instances, photographs are of equipment prototypes. Therefore, before using this document, consult with your NCR representative or NCR office for information that is applicable and current.

To maintain the quality of our publications, we need your comments on the accuracy, clarity, organization, and value of this book. Please use the link below to send your comments.

*Email:* [FD230036@ncr.com](mailto:FD230036@ncr.com)

Copyright © 2018  
By NCR Corporation  
Duluth, GA U.S.A.  
All Rights Reserved

## Revision Record

Issue	Date	Remarks
A	Mar 2018	First Issue

---

# Scanner Shroud

---

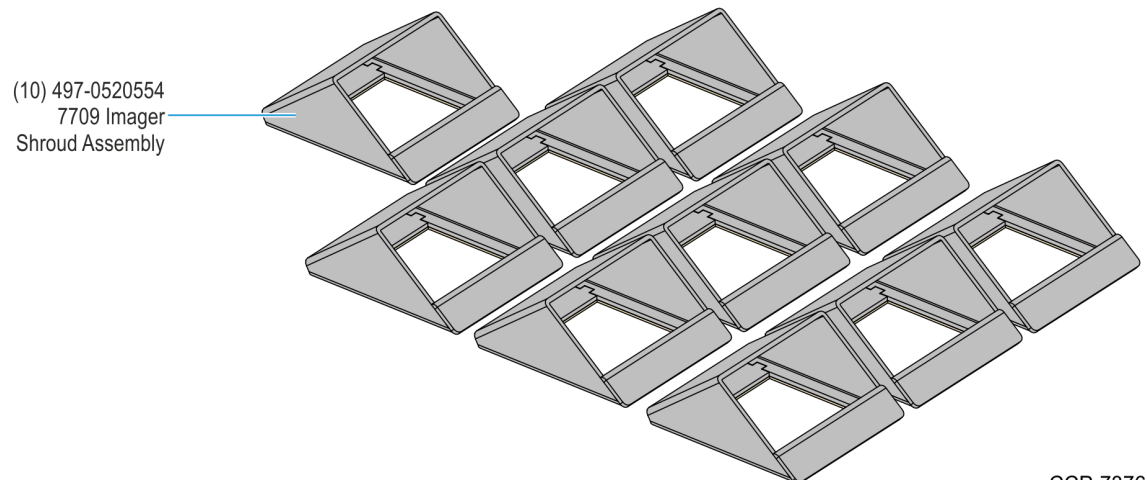
## Introduction

This kit provides a Scanner Shroud for NCR SelfServ™ 90 (7709) Kiosks using an N5680 Imaging Scanner.



CCP-73767

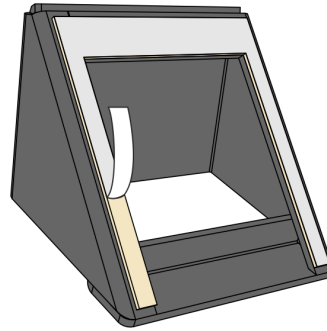
## Kit Contents



CCP-73766

# Installation Procedure

1. Peel off the back liner from the adhesive on the rear side of the Scanner Shroud.



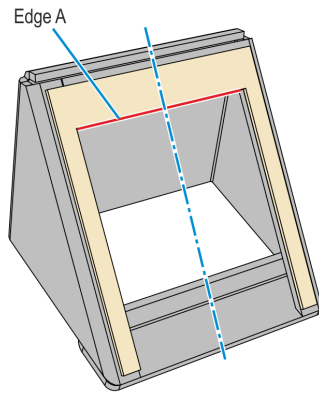
CCP-73764

2. Firmly mount the shroud over the scanner panel on the kiosk fascia. Align the shroud to the white border of the scanner panel as follows:

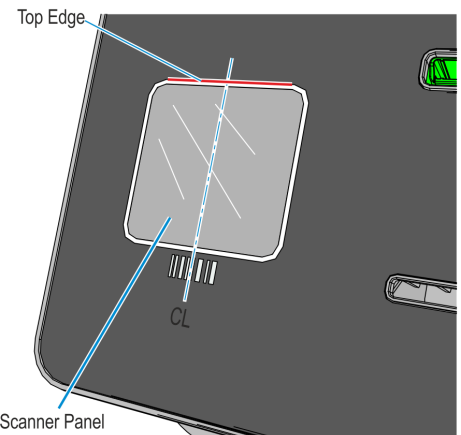


**Note:** Make sure that the Scanner Shroud is centered when mounted over the Scanner Panel.

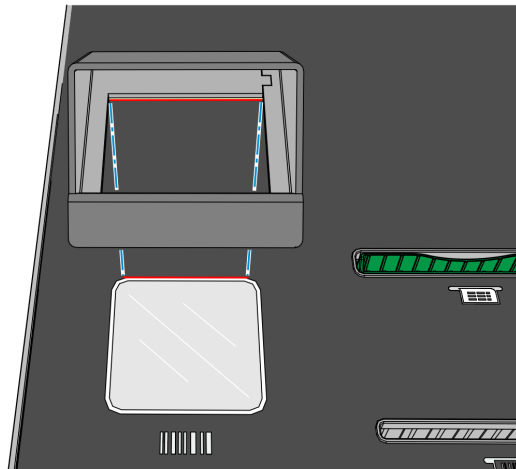
- a. Align edge A of the shroud to the top edge of the white border.



Scanner Shroud Rear View



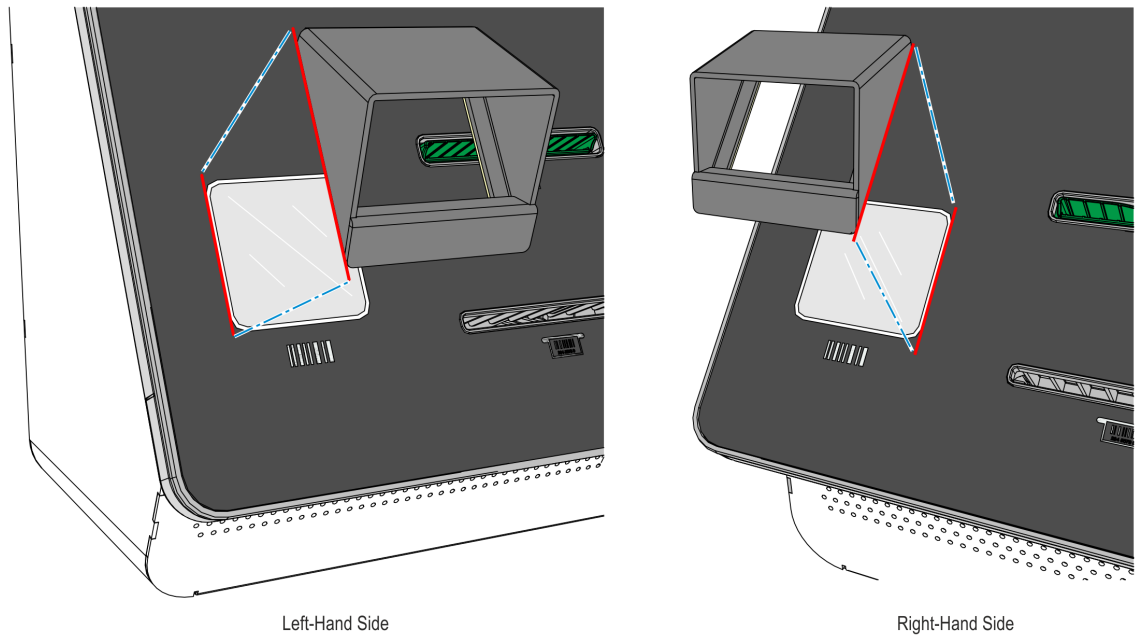
Scanner Panel



Front View

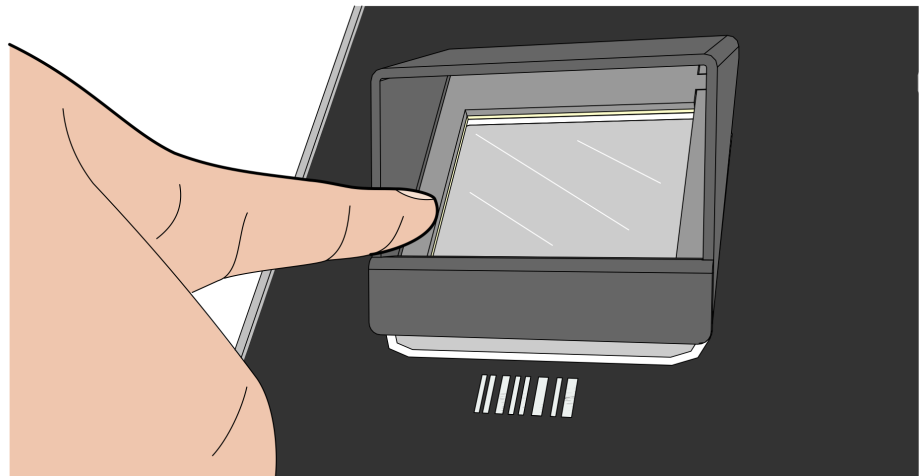
CCP-73810

- b. Align the sides of the shroud to the side edges of the white border.



CCP-73811

3. Inside the shroud, push the rear panels to make sure that the shroud is firmly attached to the fascia. Repeat this step as many times as necessary.



CCP-73812