

Kit Instructions

US Weights And Measures Label

NCR POS XR8 and XR8c (7607)

7607-K480
Issue A



The product described in this document is a licensed product of NCR Corporation.

NCR is a registered trademark of NCR Corporation. NCR POS is a trademark of NCR Corporation in the United States and/or other countries. Other product names mentioned in this publication may be trademarks or registered trademarks of their respective companies and are hereby acknowledged.

The terms HDMI and HDMI High-Definition Multimedia Interface, and the HDMI Logo are trademarks or registered trademarks of HDMI Licensing LLC in the United States and other countries.

Where creation of derivative works, modifications or copies of this NCR copyrighted documentation is permitted under the terms and conditions of an agreement you have with NCR, NCR's copyright notice must be included.

It is the policy of NCR Corporation (NCR) to improve products as new technology, components, software, and firmware become available. NCR, therefore, reserves the right to change specifications without prior notice.

All features, functions, and operations described herein may not be marketed by NCR in all parts of the world. In some instances, photographs are of equipment prototypes. Therefore, before using this document, consult with your NCR representative or NCR office for information that is applicable and current.

To maintain the quality of our publications, we need your comments on the accuracy, clarity, organization, and value of this book. Please use the link below to send your comments.

EMail: FD230036@ncr.com

Copyright © 2018
By NCR Corporation
Atlanta, GA U.S.A.
All Rights Reserved

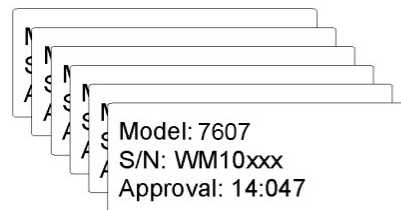
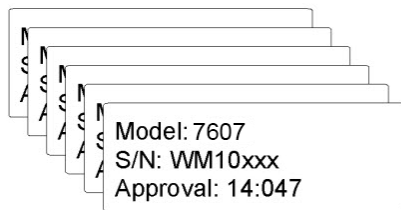
Revision Record

| Issue | Date | Remarks |
|-------|------------|-------------|
| A | April 2018 | First Issue |
| | | |
| | | |

US Weights and Measures Label Kit for NCR POS XR8

Kit Contents

This kit provides 10 serialized labels for placement on a NCR POS XR8 or NCR POS XR8c (7607).

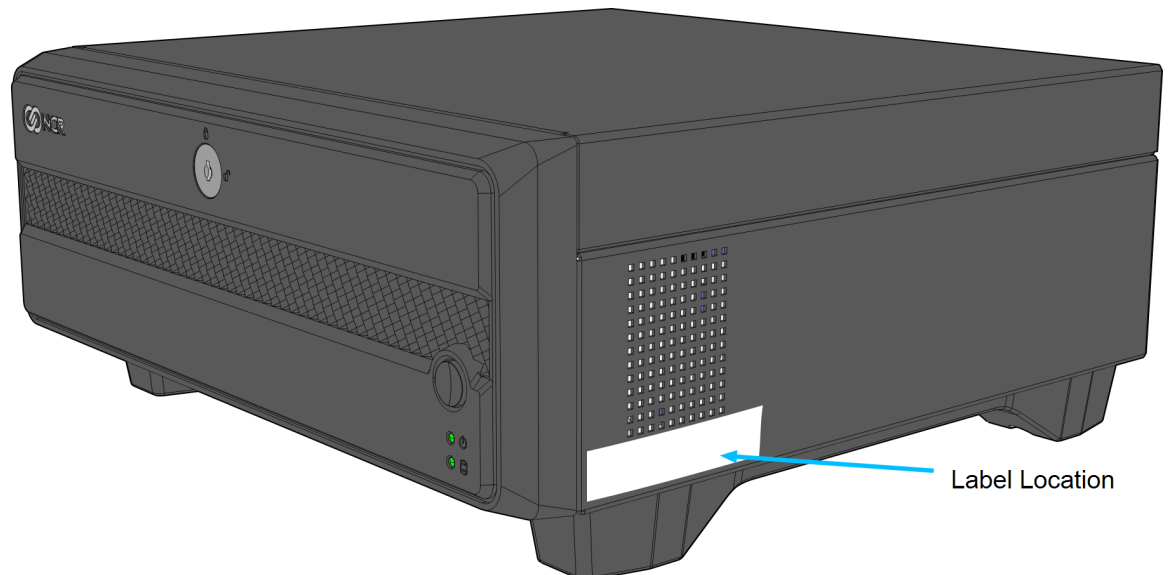


ATL-34214

Label Placement

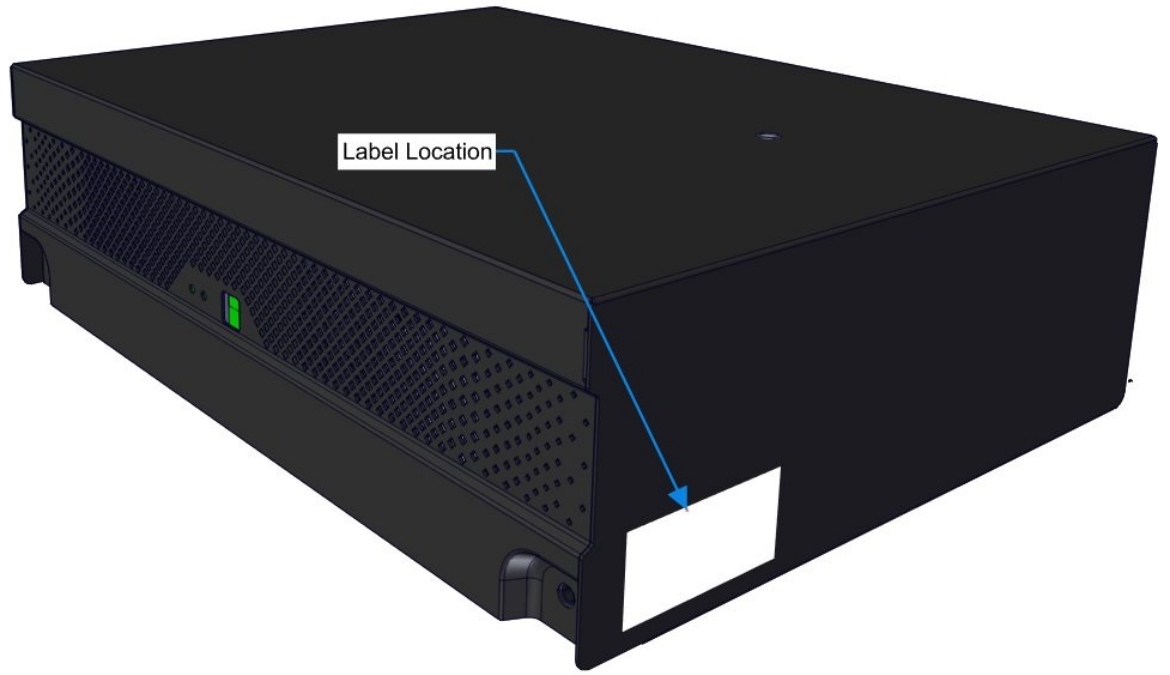
Place the label in the location shown below.

XR8



ATL-34215

XR8c



ATL-34213