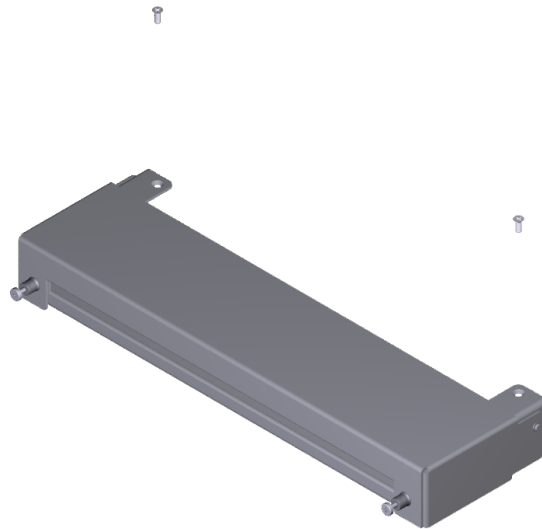




# Tamper Resistant Cover, Remote I/O

## Kit Instructions

---



7772-K200

Issue A

# Copyright

---

The product described in this document is a licensed product of NCR Voyix Corporation.

NCR CX7 All-in-One POS (7772) is a trademark of NCR Voyix Corporation in the United States and/or other countries. Other product names mentioned in this publication may be trademarks or registered trademarks of their respective companies and are hereby acknowledged.

Where creation of derivative works, modifications or copies of this NCR Voyix copyrighted documentation is permitted under the terms and conditions of an agreement you have with NCR Voyix, NCR Voyix's copyright notice must be included.

It is the policy of NCR Voyix Corporation to improve products as new technology, components, software, and firmware become available. NCR Voyix, therefore, reserves the right to change specifications without prior notice.

All features, functions, and operations described herein may not be marketed by NCR Voyix in all parts of the world. In some instances, photographs are of equipment prototypes. Therefore, before using this document, consult with your NCR Voyix representative or NCR Voyix office for information that is applicable and current.

Copyright © 2020–2024  
By NCR Voyix Corporation  
Atlanta, Georgia, USA  
All Rights Reserved

# Table of Contents

---

---

<b>Copyright</b> .....	<b>2</b>
<b>Tamper Resistant Cover, Remote I/O</b> .....	<b>5</b>
Kit Contents .....	5
Installation Procedure .....	6

# Revision Record

---

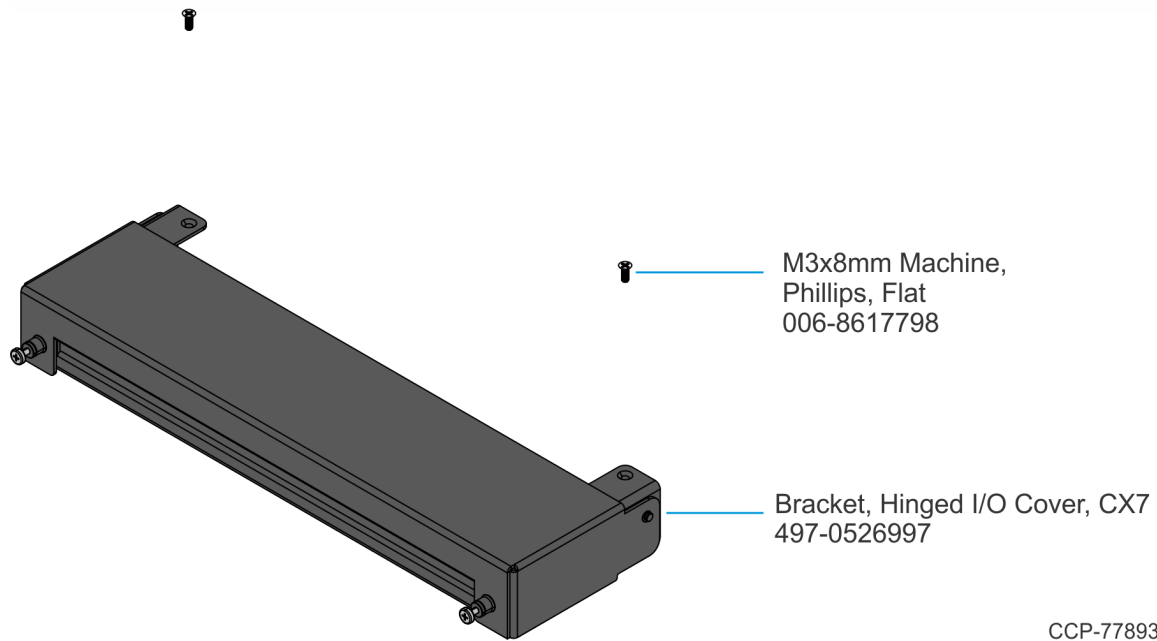
Issue	Date	Remarks
A	Aug 2020	First Issue

# Tamper Resistant Cover, Remote I/O

---

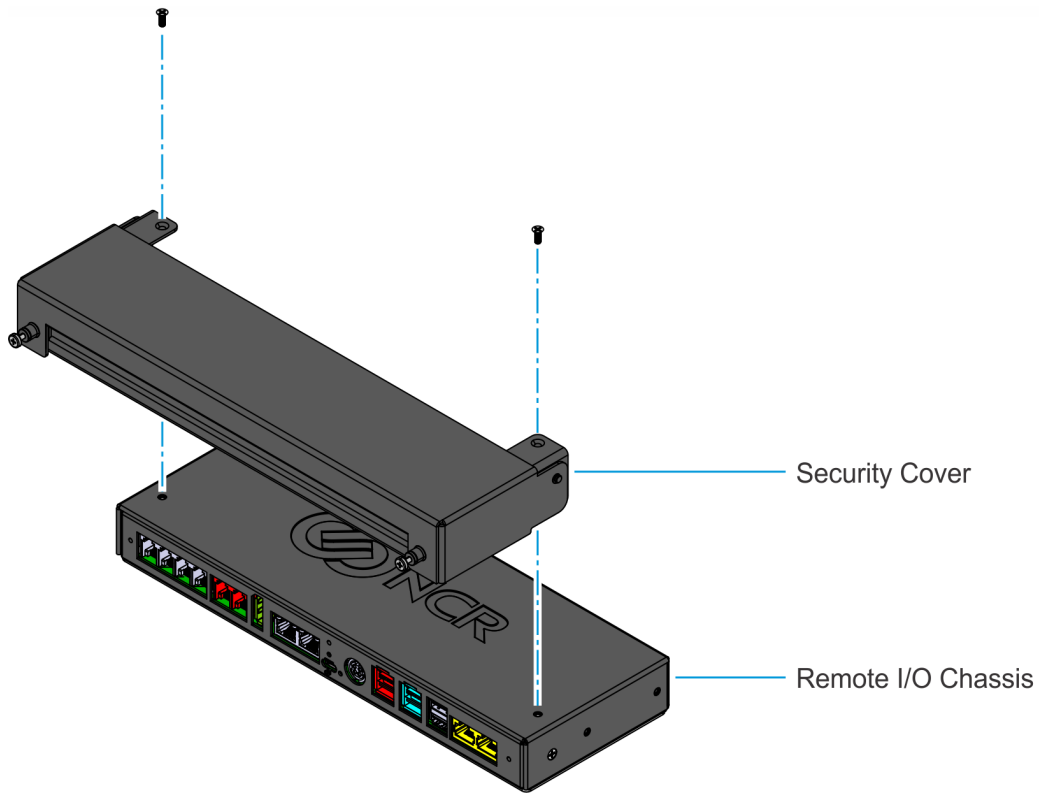
This kit provides a Tamper Resistant Cover for the Remote I/O Chassis of the NCR CX7 All-in-One POS (7772) or NCR CX5 All-in-One POS (7773).

## Kit Contents



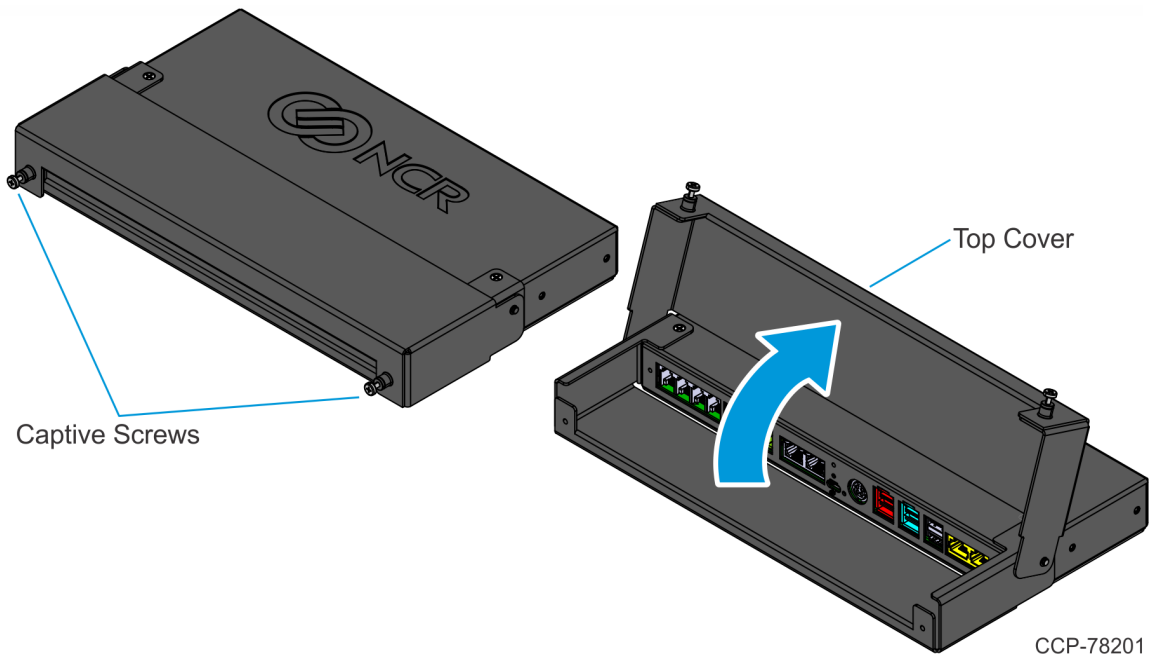
# Installation Procedure

1. Install the Tamper Resistant Cover on the Remote I/O Chassis using two (2) screws.



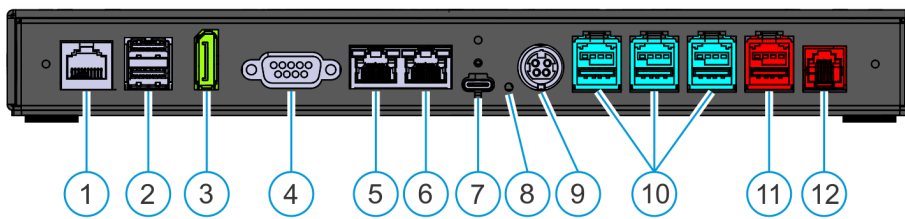
CCP-77894

2. Loosen the captive screws of the Tamper Resistant Cover and lift the Top Cover to open.



3. Connect the cables to the I/O.

**USB Centric (Retail) Remote I/O Chassis**



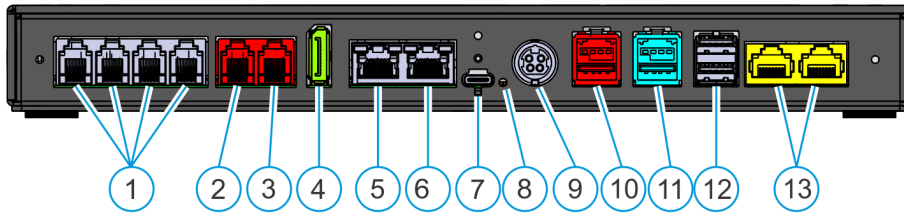
Callout	Port Name
1	RJ45 Serial (Enhanced UART)
2	Dual USB 3.0
3	DisplayPort
4	DB9 Serial (Standard UART)
5	LAN In Connect to Ethernet Network
6	LAN Out Connect to the CX Head

Confidential and proprietary information of NCR Voyix.  
Use and disclose solely pursuant to company instructions.

Callout	Port Name
7	USB-C
8	LED
9	24V Power In
10	USB 12V
11	USB 24V
12	Cash Drawer



## Serial Centric (Hospitality) Remote I/O Chassis



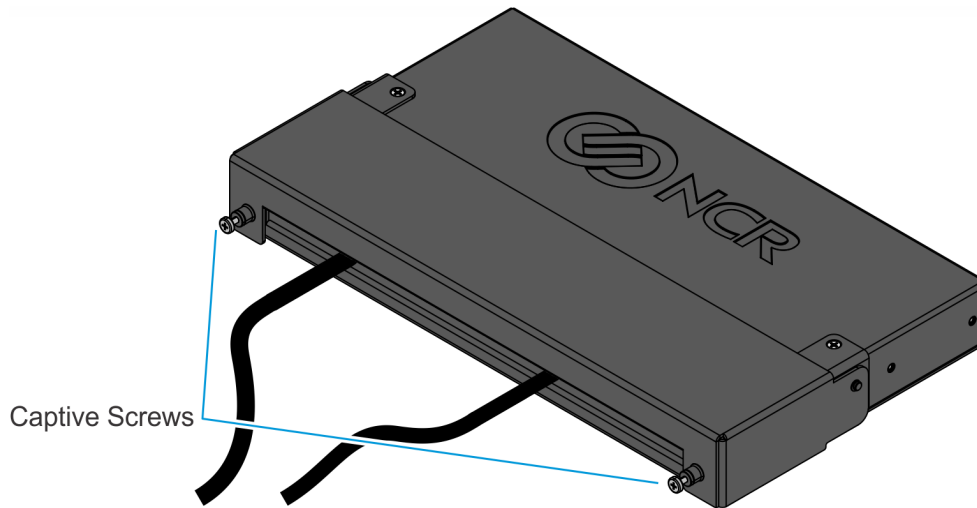
CCP-77892

Callout	Port Name
1	RJ12 Serial <ul style="list-style-type: none"> <li>• COM1 (Enhanced UART)</li> <li>• COM2 (Standard UART)</li> <li>• COM3 (Enhanced UART)</li> <li>• COM4 (Standard UART)</li> </ul>
2	Cash Drawer A
3	Cash Drawer B
4	DisplayPort
5	LAN In Connect to Ethernet Network
6	LAN Out Connect to the CX Head
7	USB-C
8	LED
9	24V Power In
10	USB 24V
11	USB 12V
12	Dual USB 3.0

Confidential and proprietary information of NCR Voyix.  
 Use and disclose solely pursuant to company instructions.

Callout	Port Name
13	RJ45 Serial <ul style="list-style-type: none"><li>• COM5 (Enhanced UART)</li><li>• COM6 (Standard UART)</li></ul>

4. Close the Top Cover and tighten the captive screws.



CCP-78202