

KIT INSTRUCTIONS

Cabinet Extension

8820-K480
Issue A



The product described in this book is a licensed product of NCR Corporation.

NCR is a registered trademark of NCR Corporation. NCR RealPOS is a trademark of NCR Corporation in the United States and/or other countries. Other product names mentioned in this publication may be trademarks or registered trademarks of their respective companies and are hereby acknowledged.

The terms HDMI and HDMI High-Definition Multimedia Interface, and the HDMI Logo are trademarks or registered trademarks of HDMI Licensing LLC in the United States and other countries.

Where creation of derivative works, modifications or copies of this NCR copyrighted documentation is permitted under the terms and conditions of an agreement you have with NCR, NCR's copyright notice must be included.

It is the policy of NCR Corporation (NCR) to improve products as new technology, components, software, and firmware become available. NCR, therefore, reserves the right to change specifications without prior notice.

All features, functions, and operations described herein may not be marketed by NCR in all parts of the world. In some instances, photographs are of equipment prototypes. Therefore, before using this document, consult with your NCR representative or NCR office for information that is applicable and current.

To maintain the quality of our publications, we need your comments on the accuracy, clarity, organization, and value of this book. Please use the link below to send your comments.

Email: FD230036@ncr.com

Copyright © 2016
By NCR Corporation
Duluth, GA U.S.A.
All Rights Reserved

Revision Record

Issue	Date	Remarks
A	Feb 2016	First Issue

Cabinet Extension

This kit contains the components to add a cabinet extension to the SelfServ XK7 (8820) Slim Pedestal Kiosk.

Kit Contents

Washer, 17/32" ID, 1-1/16" OD,
Thickness 0.07"-0.13"
006-8616384

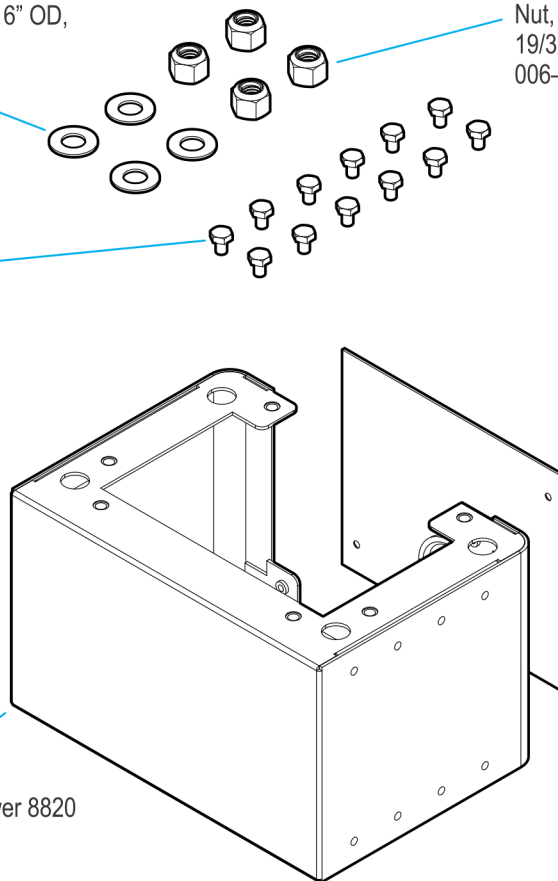
Nut, 1/2"-13 Thread, 3/4" Width,
19/32" Height, Nylon-insert Locknut, Hex
006-8616381

Bolt, 1/4"-20 x 0.375",
Hex Head
006-8611144

Screw, Metric Flat Head Phillips
Machine Screw, M4 Size, 8mm
006-8613226

Extension, Cabinet, Lower 8820
795-0230900-0999

Extension Cover,
Cabinet, Lower 8820
795-0231700-1799



Installation Procedure

Before installing the cabinet extension, the UPS, Printer Power Brick, and AC Power Strip must first be removed from the kiosk.



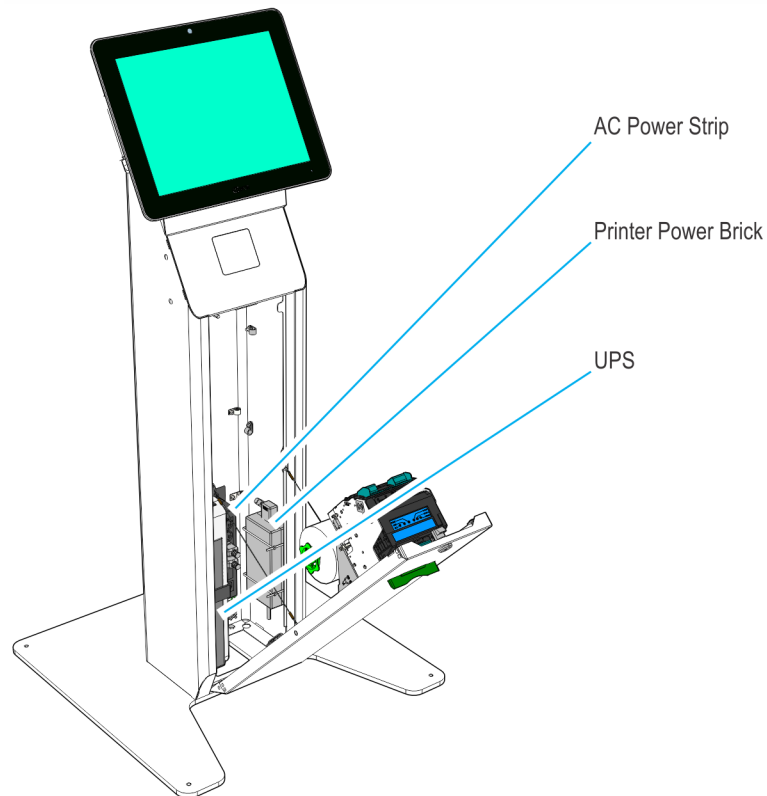
Caution: Turn off the power and disconnect the power cable of the unit.



Caution: Static Electricity Discharge may permanently damage your system. Discharge any static electricity build up in your body by touching the kiosk chassis for a few seconds. Avoid any contact with internal parts and handle cards only by their external edges.

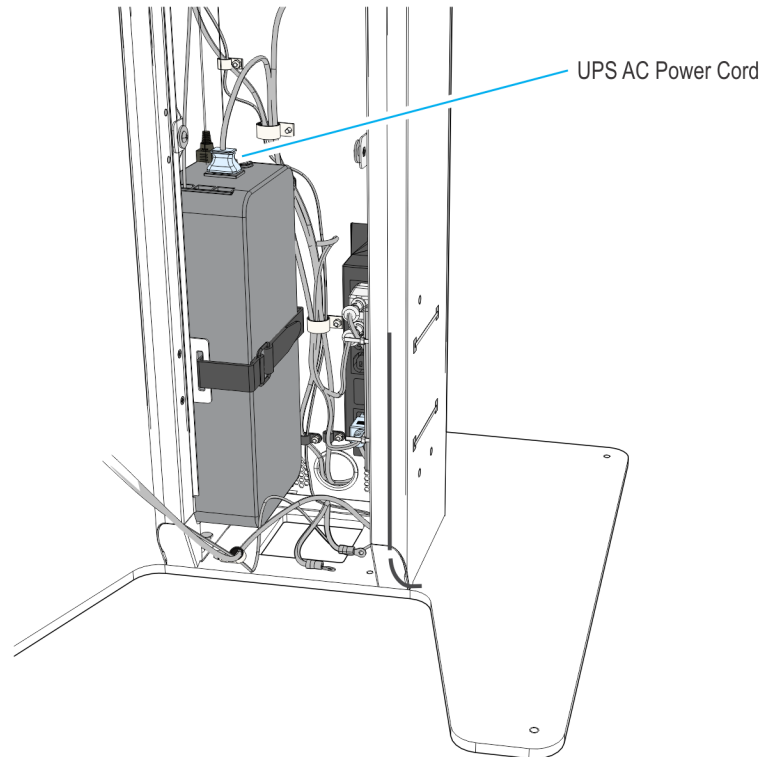
Removing the Pedestal Components

Open the Pedestal Door (keylock) to gain access to the internal pedestal components.



Removing the UPS

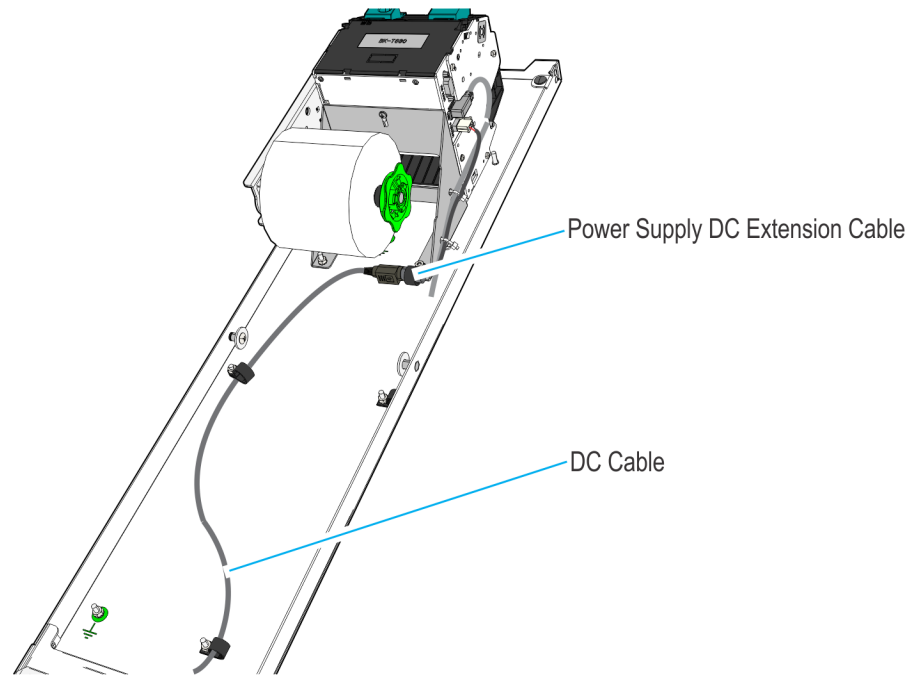
1. Disconnect all the device AC Power Cords from the UPS.
2. Disconnect the UPS Cable from the UPS.
3. Disconnect the Cable Clamps holding the UPS AC Power Cord to the Chassis.



4. Remove the Nylon Strap that secures the UPS.

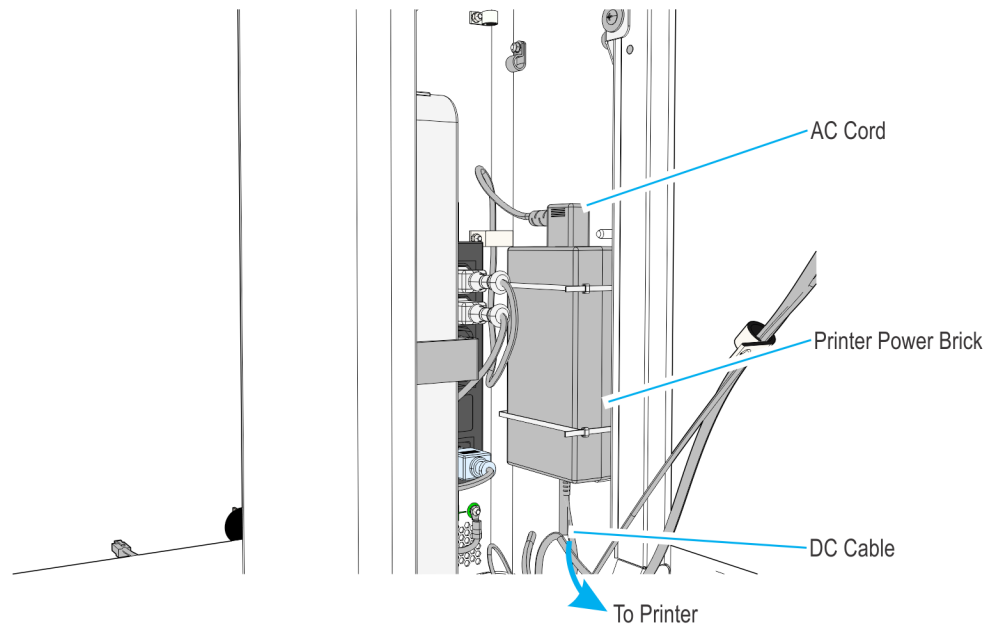
Removing the Printer Power Brick

1. Disconnect the DC Cable from the Power Supply DC Extension Cable.
2. Remove the DC Cable from the cable clamps on the Pedestal Door.



32514

3. Disconnect the AC Cord from the Printer Power Brick.

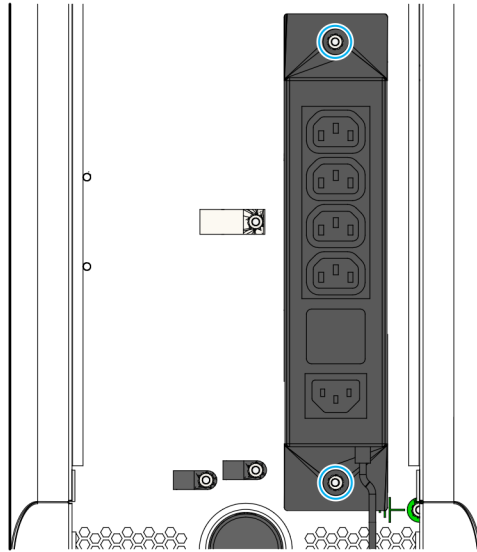


32513

4. Cut the cable ties securing the Printer Power Brick.

Removing the AC Power Strip

1. Disconnect all the AC Cords from the AC Power Strip.
2. Remove the AC Power Strip (2 nuts).



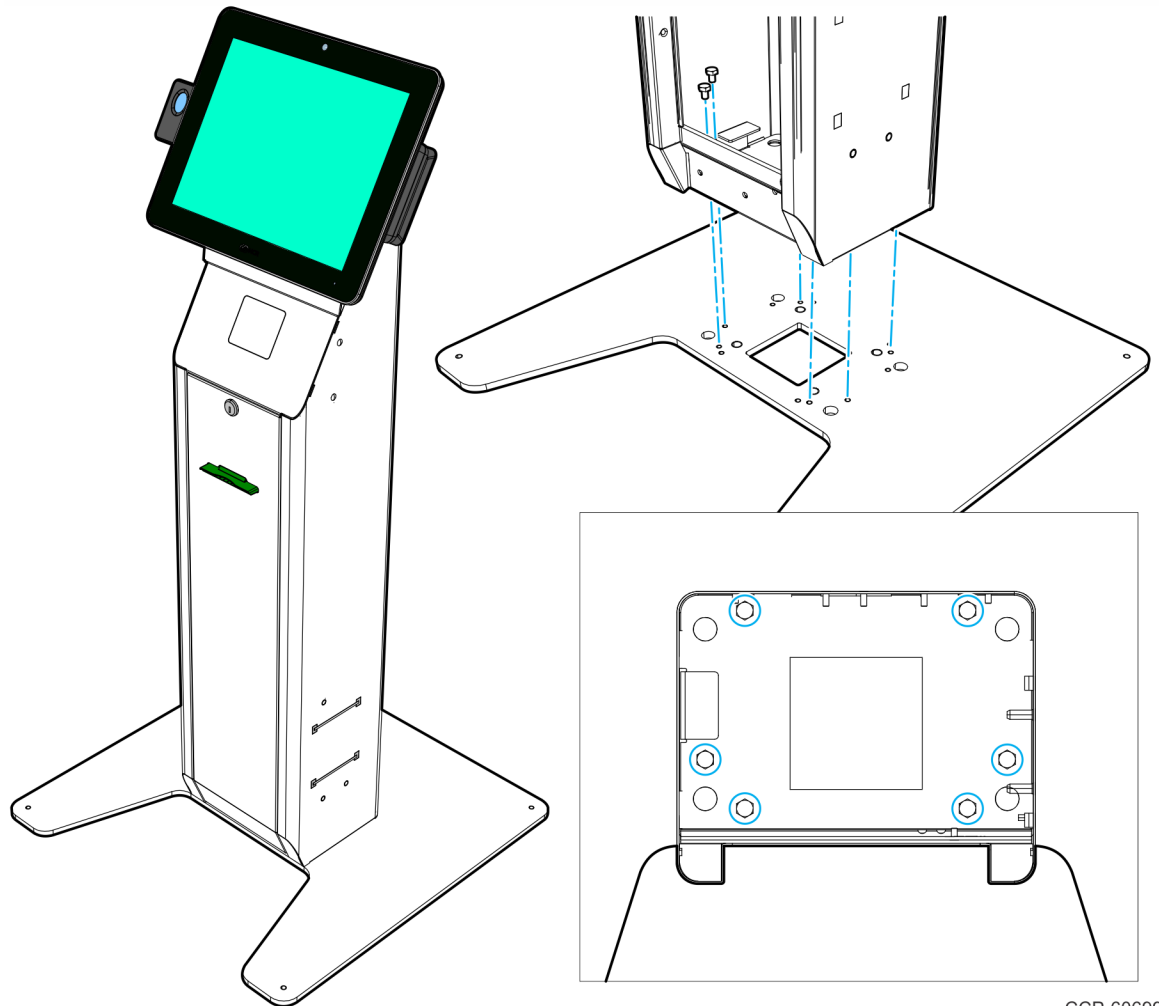
CCP-60709

Installing the Cabinet Extension

The procedure for installing the Cabinet Extension will depend whether the SelfServ XK7 (8820) Slim Pedestal Kiosk is mounted on a base plate or on the floor.

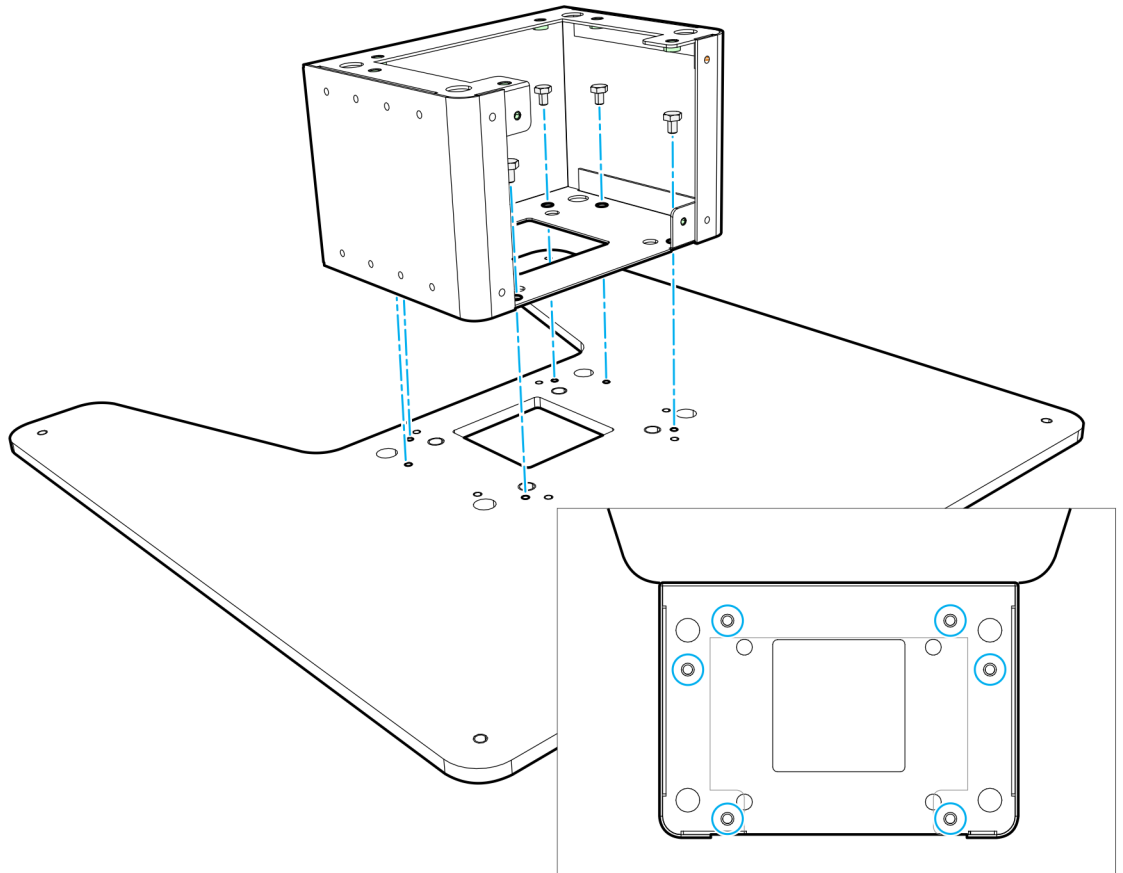
With Base Plate

1. Remove the (6) hex bolts that hold the cabinet to the base plate. Move the cabinet in a safe place in an upright position.



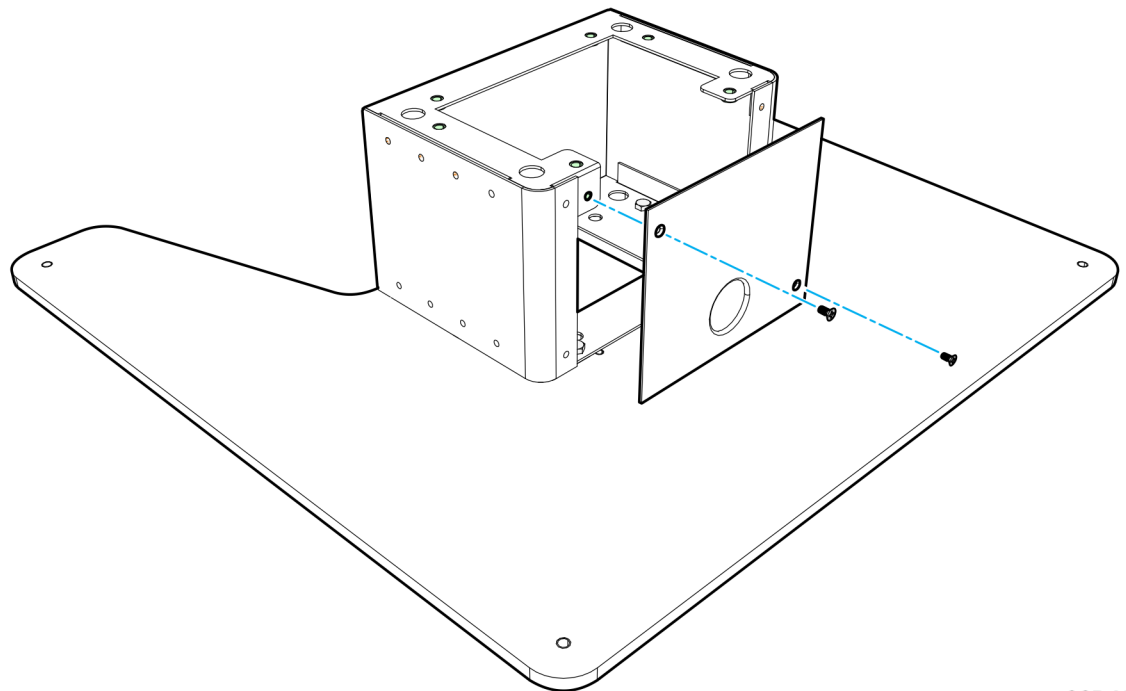
CCP-60699

2. Mount the cabinet extension to the base plate (6 hex bolts). Ensure that the uncovered side of the cabinet extension faces the back.



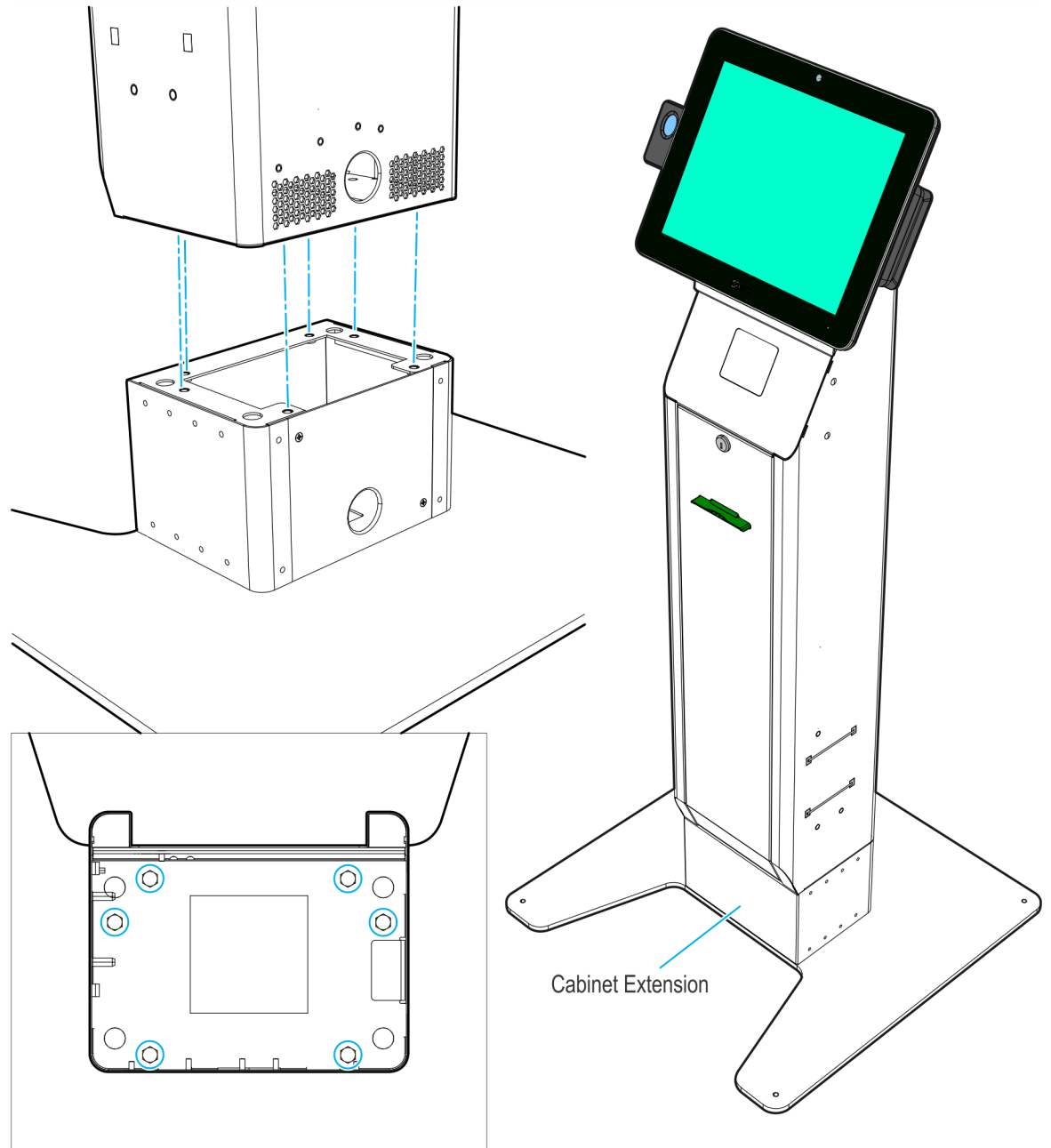
CCP-60700

3. Screw the extension cover on the cabinet extension (2 screws).



CCP-60701

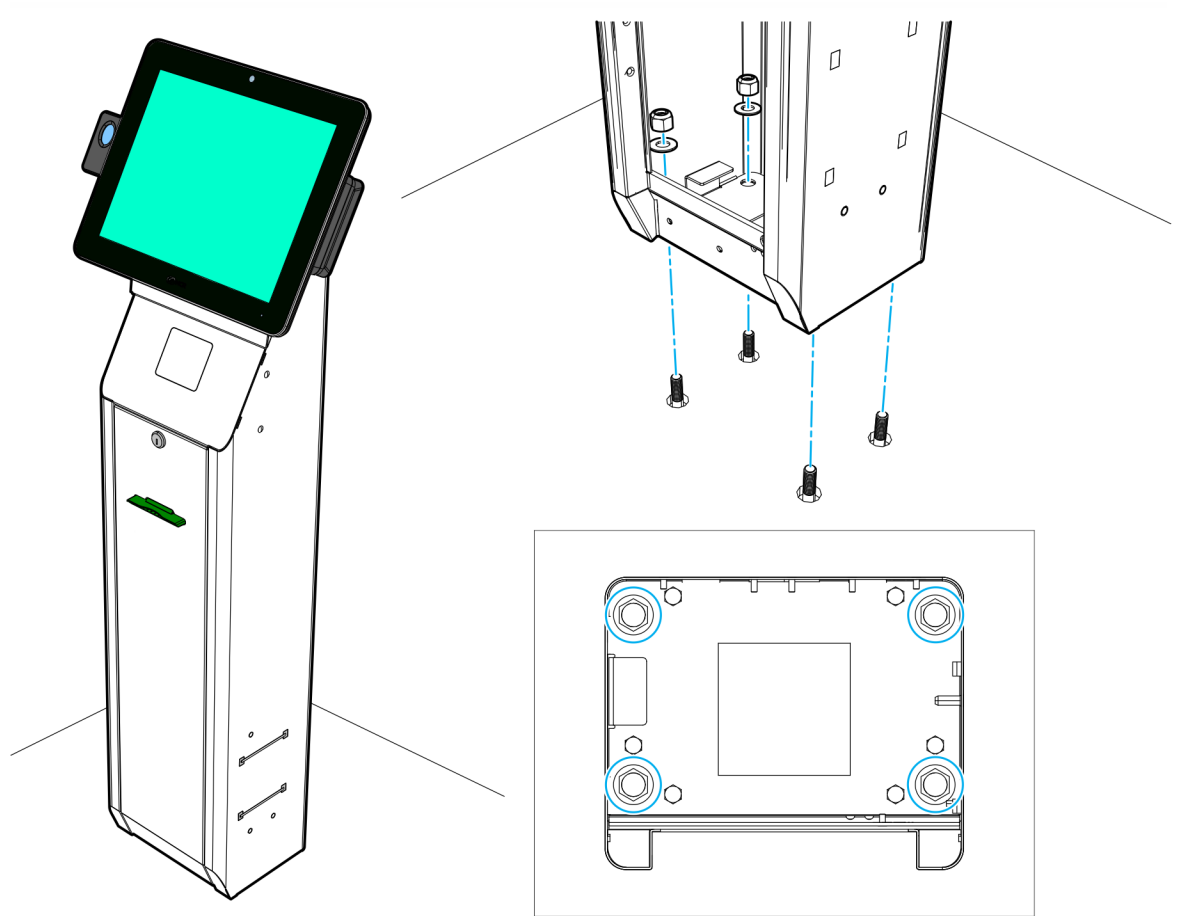
4. Install the cabinet on top of the cabinet extension (6 hex bolts).



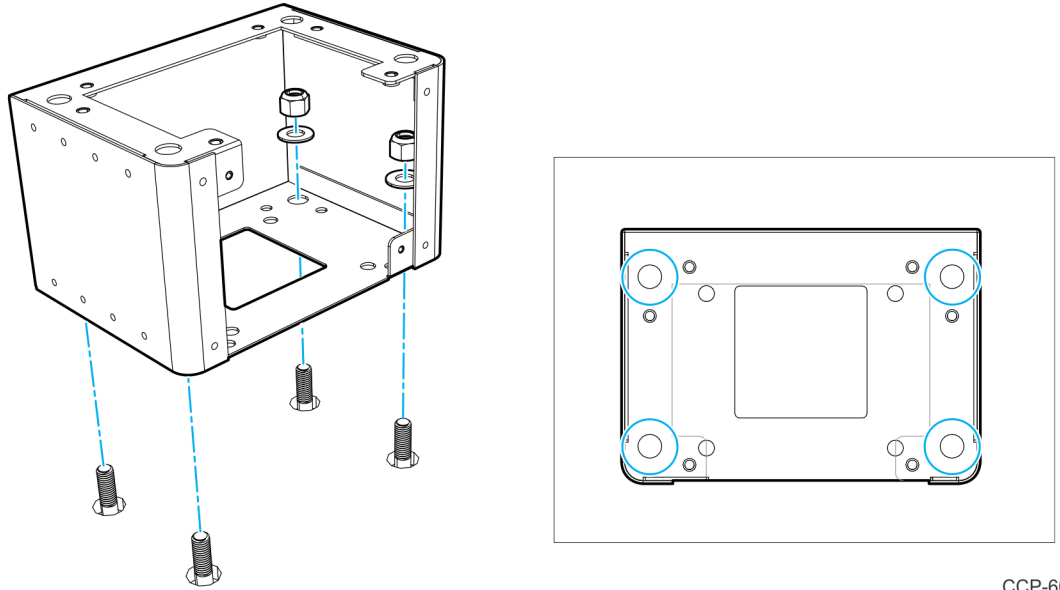
5. Reinstall the AC Power Strip, Printer Power Brick, and UPS.

Without Base Plate (Floor Mounted)

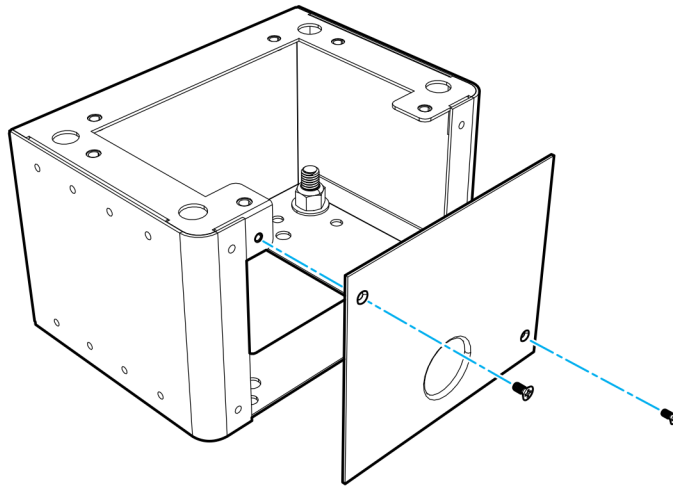
1. Remove the (4) hex nuts and (4) washers that hold the cabinet to the anchor bolts on the floor. Move the cabinet in a safe place in an upright position.



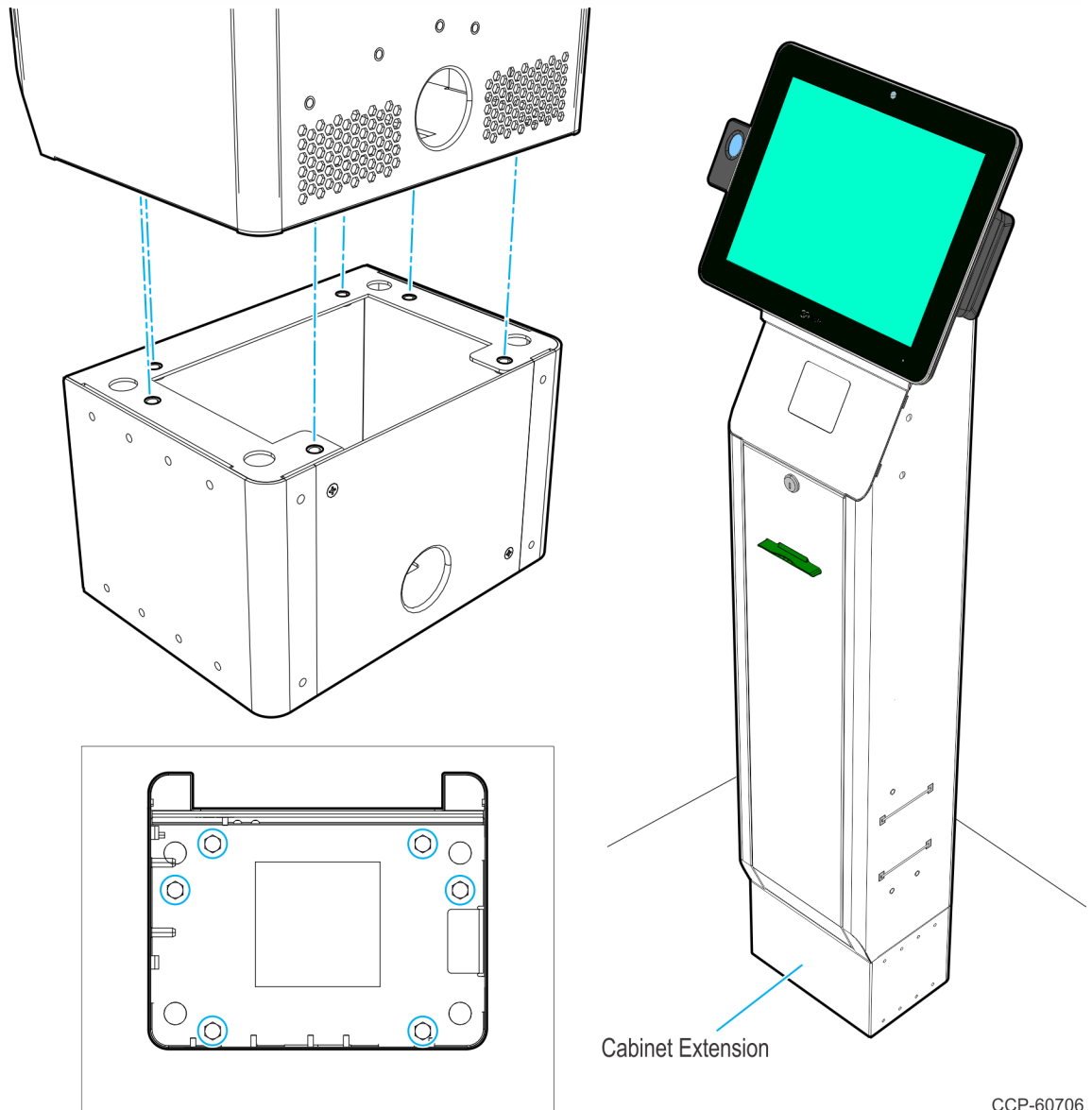
2. Mount the cabinet extension to the anchor bolts (4 hex nuts and 4 washers). Ensure that the uncovered side of the cabinet extension faces the back.



3. Screw the extension cover on the cabinet extension (2 screws).



4. Install the cabinet on top of the cabinet extension (6 hex bolts).



5. Reinstall the AC Power Strip, Printer Power Brick, and UPS.

